



10 Year Plan

Meeting the demand for school places in Essex

2021-2030

Contents

1. Executive Summary	3
1.1 Areas of growth and additional places planned	3
1.2 Purpose and scope	4
1.3 School Organisation, Funding & Delivery	4
1.4 Net-Zero Schools	5
2. Introduction – Planning for school places	6
2.1 Statutory duty and available funding	6
2.2 Forecasting methodology	7
2.3 Sustainable Schools Strategy	8
2.4 Academies and Free Schools	8
2.5 Factors that influence planning for school places	9
2.6 New Housing, S106 and Community Infrastructure Levy	9
3. Forecasts and Plans	12
3.1 Mid Essex	13
3.1.1 Braintree	14
3.1.2 Chelmsford	21
3.1.3 Maldon	28
3.2 North East Essex	32
3.2.1 Colchester	33
3.2.2 Tendring	40
3.3 South Essex	46
3.3.1 Basildon	47
3.3.2 Brentwood	52
3.3.3 Castle Point	55
3.3.4 Rochford	58
3.4 West Essex	62
3.4.1 Epping Forest	63
3.4.2 Harlow	69
3.4.3 Uttlesford	72
4. Past Expansion Projects and New Schools in Essex	80

1. Executive Summary

1.1 Areas of growth and additional places planned

In Essex (Essex County Council or ECC) in September 2020 there were 449 primary, infant and junior schools; 78 secondary schools; 1 all-through school and 1 University Technical College. The total capacity in May 2020 was 128,289 primary places and 99,826 secondary places. Due to COVID-19 the May 2020 School Census was not conducted, but in January 2020 there were 118,080 primary pupils and 89,124 secondary pupils (including sixth form) on roll at ECC schools. This was an increase of 563 primary and 2,198 secondary pupils since January 2019.

The significant increase in demand for school places in Essex is predicted to continue. The forecasts used in this Plan suggest that the total number on roll by 2030/31 will be 131,635 primary pupils and 99,693 secondary school pupils (including sixth form).

The actual need for places is greater than the Essex-wide figures above suggest, as the available capacity is not all in the right areas or year groups. The National Audit Office report 'Capital Funding for New School Places' (2013) refers to a minimum 5% surplus that the Department for Education (DfE) assumes in its planning as necessary to support operational flexibility.

For school management reasons the number of pupils that can be admitted each September varies, and overall capacity cannot simply be divided by the number of year groups to calculate the number of pupils that can be admitted each year. When planning school places it is prudent to focus on the Published Admission Number of schools in each area and the number of pupils in each corresponding admission year.

Based on the number of projects anticipated ECC will need to deliver an additional 9,500 primary school places and 4,100 secondary school places over the course of the 10 Year Plan.

1.2 Purpose and scope

The purpose of the 10 Year Plan is to set out:

- The demand for mainstream school places in the next 10 years (from academic year 2021/22 to academic year 2030/31) for each of the districts and the County Council's plans to address this demand.
- Solutions already in the pipeline that will meet the forecast demand for school places.
- Potential options to address medium to long term forecast demand for school places.
- The context in which the Essex School Organisation Service operates to ensure there are sufficient school places.

This 10 Year Plan is based on forecasts produced at the end of the summer term of the 2019/20 academic year. The Plan is updated annually to take into account new forecasts, the capital budget setting cycle, and potential options and solutions that have been identified since the previous version.

The scope of the 10 Year Plan is mainstream statutory age education provision in Essex. SEND, Early years, sixth form and other forms of education provision are not within the scope of this plan but are considered when deciding solutions to ensure efficient and sustainable choices are made for capital investment.

1.3 School Organisation, Funding & Delivery

School Organisation

For the purposes of planning school places, ECC organises schools by quadrants, districts and planning groups. The quadrants and their districts are listed in the following table:

Mid Braintree, Chelmsford, Maldon	North East Colchester, Tendring
South Basildon, Brentwood, Castle Point, Rochford	West Epping Forest, Harlow, Uttlesford

Planning groups are groups of schools, defined by geography and admission patterns, wherein a sufficiency of places across the group will generally ensure every child can access a local school place, even if some schools are oversubscribed. Planning groups provide the basis for the annual DfE School Capacity (SCAP) return, which determines the level of 'Basic

Need' funding ECC is allocated. The planning group forecasts are set out in detail in Section 3 of this document.

The Essex School Organisation Service comprises a team of 10 officers who manage the school organisation and place planning activity of the local authority. Officers from the team have assigned quadrants and liaise with schools individually and collectively to discuss current numbers on roll, future demand for places and any projects that need to be completed to ensure sufficient capacity. Officers from the team also engage with planning authorities, local members, residents, communities, faith groups, developers and all tiers of government. In this way they develop the 10 Year Plan collaboratively with schools and other stakeholders.

Funding & Delivery

ECC uses a mixture of funding sources to finance additional school places. Funding sources available include Basic Need grant from central government; Section 106 / Community Infrastructure Levy contributions from developers; Free School funding from the Education and Skills Funding Agency (ESFA) and contributions from schools. New school places must be funded through these means as ECC has no other grants or funds dedicated to providing school places.

The Capital Programme, which includes the planned spending on education infrastructure, is published annually at www.essex.gov.uk. ECC has a professional in-house Infrastructure Delivery Team. The team assist the development of school expansions and new schools by undertaking viability studies and then leading on the delivery of the capital projects through to completion. Through the work of this team school building projects are delivered to a high standard and at good value, ensuring the best outcome from the investment of public funds.

1.4 Net-Zero Schools

Since the start of 2020 ECC has commissioned all school expansion projects to include renewable energy solutions as a contribution towards combatting climate change. This enhances already highly energy-efficient building specifications. ECC is actively investigating net-zero energy design for new school buildings to become the standard as soon as possible. This work complements a programme of energy efficiency upgrades and other works being planned for existing school buildings to further reduce Essex's carbon footprint.

2. Introduction – Planning for school places

2.1 Statutory duty and available funding

ECC has a statutory duty to ensure sufficient school places for children aged between 4 and 16 years old. Fulfilling this duty, and aligning strategic planning for school places with other service requirements, supports all of the strategic aims of the Essex Organisation Strategy 2017-2021:

- Enable inclusive economic growth.
- Help people get the best start and age well.
- Help create great places to grow up, live and work.
- Transform the council to achieve more with less.

To discharge this responsibility school organisation changes are commissioned in response to forecast data that predicts the demand for school places. These school organisation changes include building new schools, expanding existing schools, closing schools, or reducing the intake at schools.

As stated in section 1.3, there are a number of funding sources for delivering school building projects, all of which need to be coordinated through the Council's Capital Programme. A long-term plan for ensuring sufficient school places is required to enable capital (and revenue) financing to be secured and spent effectively.

The 10 Year Plan is revised each autumn following submission of the School Capacity Return (SCAP Return), to the DfE. The SCAP Return is completed by all local authorities during the summer. The SCAP Return is the basis on which Basic Need grants are calculated. Endorsement for the Plan is sought from the Council's Investment Board upon each revision to enable a dynamic response to changes in demand for school places, thereby ensuring that every child in Essex has an appropriate place to go to school.

2.2 Forecasting methodology

School forecasts are prepared for each area using the number on roll in the January 2020 Census; the number of places offered for September 2020; historical trends in admissions; and GP registrations in January 2020 (the number of children registered with a GP's surgery from NHS data). For year groups beyond GP registration data an average of the last three potential cohort sizes is taken and Office for National Statistics birth rate trends are applied to estimate long term need. For schools with sixth forms historical staying on rates are calculated and applied to the relevant cohorts.

The number of additional pupils likely to be generated by new housing is added to the forecasts, though it must be recognised that market conditions, and thereby delivery rates, can change. Despite the potential for forecasts to be skewed by changeable housing data, it is important that the 10 Year Plan anticipates the potential increase in households in an area so ECC can meet its statutory duty to facilitate sufficient school places. These figures are based on 'housing trajectories' supplied by district councils, amended with subsequent planning approvals and information from housing developers and planning authorities. Clearly the impacts of Brexit and COVID-19 will affect housing delivery and therefore pupil demand.

The likely demand for additional places at local schools created by new housing is calculated using different factors for houses and flats. One-bedroom units and certain other types of dwellings, such as student accommodation and housing for the elderly, that are unlikely to house children are discounted from the calculation. The factors used are 0.3 additional primary school pupils per new house and 0.15 additional pupils per new flat. For secondary pupils the factors are 0.2 additional pupils per new house and 0.1 additional pupils per new flat. The gradual build-up of pupils from new housing is modelled through additional factors to stagger the pupil product, rather than the full pupil product being added in the first year that new homes are occupied.

2.3 Sustainable Schools Strategy

The aim of the Sustainable Schools Strategy is to encourage schools which are strong and viable both educationally and financially, and which provide our children with a high-quality education.

The Sustainable Schools Strategy group explores the issues facing schools, including forecast pupil numbers; budget pressures; recruitment and retention; school standards (currently most Essex schools are rated good or outstanding by OFSTED); importance to communities and potential income opportunities. Key indicators are used to provide a framework to consider issues of school sustainability. The intention is to offer assistance to all those involved with schools, helping to assess where early intervention is required.

The group also makes recommendations to the Director of Education to ensure that where possible schools can take proactive decisions to secure a sustainable future and provide a high-quality education.

2.4 Academies and Free Schools

There are more than 300 academies in Essex. The council has a robust procedure in place to support the academy conversion process, which is primarily a legal function.

Free Schools were initially a method for groups of parents or other parties to set up a school that would provide diversity in the school system, often in response to low standards in the local area. Over recent years the Free Schools programme has changed. Not only are all new schools proposed by local authorities considered Free Schools (this has no practical impact on opening new schools), but Free Schools are now being proposed by multi-academy trusts and other groups, in response to forecast demand.

The Free Schools Programme provides an opportunity for ECC to build on a strong collaborative working relationship with the Regional Schools Commissioner and multi-academy trusts in Essex. This will enable ECC to continue to ensure sufficient school places even if / when no schools are under its direct control.

2.5 Factors that influence planning for school places

There are a number of factors that influence strategic thinking and basic need solutions outlined in this 10 Year Plan. These are kept under regular review and include:

- Fluctuation in forecast pupil numbers.
- Local Development Plans (many of which are still ‘emerging’).
- Phasing and timing of actual housing developments and the availability of sites for new school provision (services, access, infrastructure).
- Changing patterns of growth in mid-year migration.
- Schools and Academies adjusting their Published Admission Numbers or capacities.
- Cross border migration patterns and delivery solutions.
- Changes to admissions arrangements.
- Project viability.
- Home to school transport.

The Home to School Transport Budget comprises a grant (which is not ‘ring-fenced’) and a contribution from the Dedicated Schools Grant. This budget is under constant pressure. When considering the strategic need for additional school places in an area the transport implications are key to determining the locations of solutions, and considering the cost / benefit of those solutions. Where solutions do not address a local need and transport must be provided, ECC would be obliged to meet the cost of the transport in perpetuity.

2.6 New Housing, Section 106, and Community Infrastructure Levy

The 12 borough / district / city councils in Essex that act as local planning authorities are required to draw up Local Development Plans. Under the terms of the National Planning Policy Framework (NPPF) these Local Plans must identify sufficient deliverable housing sites to meet their objectively assessed housing need for at least the first five years of the Plan period. In addition, they are required to identify specific developable sites for new housing for years 6-10 of the Plan period to enable an ongoing five-year supply of housing sites. ECC comments on the likely impact on school places of new housing allocations to help local planning authorities understand how sustainable their plans are for school place planning and, importantly, where they need to allocate land for new school place provision.

To meet the need for new housing a number of Local Planning Authorities are considering establishing Garden Communities. These will be significant new settlements that will need to be self-sustaining in terms of infrastructure. The precise scale of plans and timescales

are still emerging, so in some cases our forecasts have yet to include this growth. New schools will need to be planned and future versions of this document will consider the needs of these Garden Communities.

A number of the local planning authorities do not have an up to date adopted Local Plan. This has resulted in housing developers submitting speculative planning applications for sites that may not be sustainable for school place provision. In the absence of a five-year land supply the applicant has a strong chance of a successful appeal if the planning application is refused. This can result in housing developments being granted planning permission in areas where there are insufficient surplus school places to accommodate the pupil product from the new homes, but the development is of insufficient scale to generate a developer contribution to fund a new school or the expansion of existing schools. This can be particularly problematic in rural areas where there isn't capacity to expand the local school site. Since these housing sites are not known in advance they may also allow insufficient time to identify, plan and build places to meet the increased need. ECC seeks to limit this impact through proactive collaboration with the local planning authorities to aid them in development of their housing plans.

When the number of pupils generated by new housing is greater than the surplus capacity in permanent accommodation at appropriate local schools a contribution can be sought from the developer via a Section 106 (s106) agreement. This contribution can be in the form of additional land and / or a financial contribution for new accommodation. Local planning authorities decide whether to support such requests and they have a duty to balance all the requests made by infrastructure providers against the viability of the development. Full details of how developer contributions are sought and calculated can be found in ECC's Developers' Guide to Infrastructure Contributions at www.essex.gov.uk.

The Community Infrastructure Levy (CIL) allows a local planning authority to introduce a fixed charge on development to fund infrastructure that is not being delivered through s106. Of the 12 district councils in Essex only Chelmsford City Council has adopted CIL. Other councils are considering CIL but it is not thought that all 12 will adopt it.

Phasing and timelines for potential new housing developments are closely monitored and viability reports have been commissioned for the delivery of several new schools associated with new housing. Plans are being progressed with developers to ensure that new provision can be provided at the earliest viable opportunity following commencement of housing development where there is insufficient capacity within existing school provision to accommodate pupils from the initial phases.

Delivery of the new provision will be dependent on confirmation of the housing build rate by the developer, planning permissions and the timescale for delivery of necessary infrastructure to serve the new school, including services and access. The quality of the environment around the school site is essential, as a new school cannot open in the middle of a building site with no safe walking and cycling routes.

3. Forecasts and plans

The following sections include the school place forecasts at a planning group level, grouped into districts and quadrants. For each district the primary planning groups are shown first, followed by secondary planning groups. Below is an example:

1

2. Kelvedon/ Feering

Current PAN: 130

Current Capacity: 895

2

3

Reception Place Forecast

Year	21/22	22/23	23/24	24/25	25/26	26/27	27/28	28/29	29/30	30/31
+/-	13	17	5	-4	-11	-16	-20	-24	-28	-32

Feering CE Primary, Kelvedon St Mary's CE Primary Academy, St Peter's CE Primary

4

5

Number on Roll (NOR)

Year	NOR
21/22	822
22/23	852
23/24	901
24/25	936
25/26	991

6

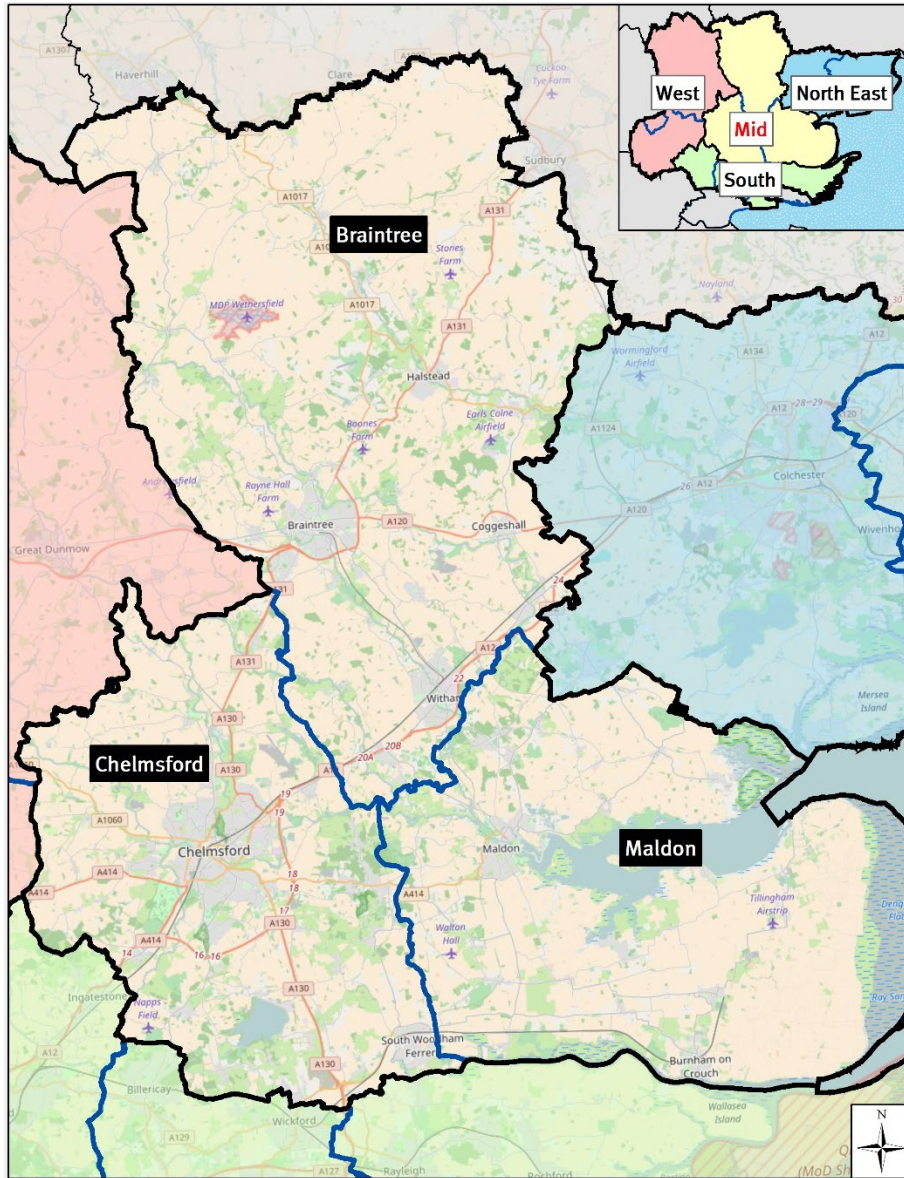
7

Project Pipeline

School	Year	Description	Places
St Peter's CE Primary	24/25	½ form entry expansion	15/105
Feering CE Primary	25/26	Small expansion	5/35

1. Name – Each planning group has a name, describing a general geographical area.
2. Current PAN - The Published Admission Number for September 2020 i.e. the number of places available at Reception or Year 7 (the first year of secondary education) in the planning group. Current Capacity is the total physical capacity of the schools.
3. Forecast – This headline forecast will be for either Reception places (primary) or Year 7 places (secondary). It shows the surplus or deficit of places forecast for the next 10 years, against PAN.
4. Schools – A list of the schools included in the planning group.
5. Number on Roll (NOR) – This data shows the entire forecast school population. This can indicate where additional school places are required in response to high levels of new housing or inward migration, even when the headline forecast doesn't indicate a need.
6. Projects Pipeline – These are the projects the council is proposing, to mitigate any forecast need for additional school places. A school will be named where the project is confirmed, along with the year of implementation and a brief description of the project.
7. Places – In the example (30/210), 30 refers to the number of Reception places created (expected increase in PAN), and 210 refers to the total capacity created across all year groups.

3.1 Mid Essex



For the purposes of school organisation and place planning Mid Essex is Braintree and Maldon districts and Chelmsford City.

Chelmsford and Maldon have adopted Local Development Plans. Braintree has submitted its local plan for Examination.

3.1.1 Braintree

Primary School Planning Groups

1. Witham/Rivenhall

Current PAN: 377
Current Capacity: 2599

Reception Place Forecast

Year	21/22	22/23	23/24	24/25	25/26	26/27	27/28	28/29	29/30	30/31
+/-	35	-3	2	-11	-17	-22	-28	-29	-31	-31

Chipping Hill Primary, Elm Hall Primary, Holy Family Catholic Primary, Howbridge CofE Junior, Howbridge Infant, Powers Hall Academy, Powers Hall Infant, Rivenhall CofE Primary, Templars Academy

Number on Roll (NOR)

Year	NOR
21/22	2,375
22/23	2,497
23/24	2,565
24/25	2,657
25/26	2,726

Project Pipeline

School	Year	Description	Places
New Primary School	23/24	Built with capacity to admit 60 per year, opening with PAN of 30	30/420
Expansion of New Primary School	27/28	1 form entry expansion of the new primary school through increasing the admissions number	30/0

An education site to accommodate a new primary school has been secured on the Lodge Farm development through a S106 agreement.

2. Kelvedon/ Feering

Current PAN: 130
Current Capacity: 895

Reception Place Forecast

Year	21/22	22/23	23/24	24/25	25/26	26/27	27/28	28/29	29/30	30/31
+/-	13	17	5	-4	-11	-16	-20	-24	-28	-32

Feering CE Primary, Kelvedon St Mary's CE Primary Academy, St Peter's CE Primary

Number on Roll (NOR)

Year	NOR
21/22	822
22/23	852
23/24	901
24/25	936
25/26	991

Project Pipeline

School	Year	Description	Places
St Peter's CE Primary	24/25	½ form entry expansion	15/105
Feering CE Primary	25/26	Small expansion	5/35

3. Halstead/ Gosfield

Current PAN: 140

Current Capacity: 1025

Reception Place Forecast

Year	21/22	22/23	23/24	24/25	25/26	26/27	27/28	28/29	29/30	30/31
+/-	36	22	18	11	7	5	5	6	5	5
Gosfield Primary, Holy Trinity CE Primary, Richard de Clare Primary, St Andrew's CE Primary										

Number on Roll (NOR)

Year	NOR
21/22	899
22/23	922
23/24	932
24/25	939
25/26	940

Project Pipeline

School	Year	Description	Places
No expansion projects currently in pipeline			

4. Hedingham

Current PAN: 75

Current Capacity: 528

Reception Place Forecast

Year	21/22	22/23	23/24	24/25	25/26	26/27	27/28	28/29	29/30	30/31
+/-	11	20	12	11	10	10	10	10	10	10
de Vere Primary, St Giles CE Primary, St Peter's CE Primary										

Number on Roll (NOR)

Year	NOR
21/22	470
22/23	460
23/24	455
24/25	446
25/26	460

Project Pipeline

School	Year	Description	Places
No expansion projects currently in pipeline			

5. Finchingfield/ Bardfield/ Wethersfield

Current PAN: 44
Current Capacity: 326

Reception Place Forecast

Year	21/22	22/23	23/24	24/25	25/26	26/27	27/28	28/29	29/30	30/31
+/-	9	10	10	10	9	9	9	9	9	9
Finchingfield CE Primary, Great Bardfield Primary, Wethersfield CE Primary										

Number on Roll (NOR)

Year	NOR
21/22	266
22/23	260
23/24	253
24/25	249
25/26	257

Project Pipeline

School	Year	Description	Places
No expansion projects currently in pipeline			

6. Braintree Town & Surrounds

Current PAN: 751
Current Capacity: 5479

Reception Place Forecast

Year	21/22	22/23	23/24	24/25	25/26	26/27	27/28	28/29	29/30	30/31
+/-	80	93	50	26	8	-9	-25	-37	-56	-72
Beckers Green Primary, Bocking Church Street Primary, Great Bradfords Infant, Great Bradfords Junior, John Bunyan Primary, John Ray Infant, John Ray Junior, Lyons Hall Primary, Notley Green Primary, Rayne Primary, Shalford Primary, St Francis Catholic Primary, St Michael's CE Primary, Stisted CE Primary, White Court Primary, White Notley CE Primary										

Number on Roll (NOR)

Year	NOR
21/22	4,925
22/23	4,939
23/24	4,992
24/25	5,064
25/26	5,167

Project Pipeline

School	Year	Description	Places
New Primary School	25/26	Built with capacity to admit 60 per year, opening with PAN of 30	30/420
Expansion of New Primary School	27/28	1 form entry expansion of the new primary school through increasing the admissions number	30/0

An education site to accommodate a new primary school has been secured on the Panfield Lane development through a S106 agreement.

7. Earls Colne/ Colne Engine

Current PAN: 76
Current Capacity: 532

Reception Place Forecast

Year	21/22	22/23	23/24	24/25	25/26	26/27	27/28	28/29	29/30	30/31
+/-	7	11	0	-3	-4	-3	-3	-3	-3	-3
Colne Engine CE Primary, Earls Colne Primary										

Number on Roll (NOR)

Year	NOR
21/22	524
22/23	539
23/24	550
24/25	563
25/26	560

Project Pipeline

School	Year	Description	Places
No expansion projects currently in pipeline			

Demand for places at these schools often comes from outside the local area. Underlying data will be monitored to determine if additional places are required to meet local demand.

8. Braintree Rural North

Current PAN: 124
Current Capacity: 858

Reception Place Forecast

Year	21/22	22/23	23/24	24/25	25/26	26/27	27/28	28/29	29/30	30/31
+/-	34	32	22	21	21	21	21	21	21	21
Belchamp St Paul's CE Primary, Bulmer St Andrew's CE Primary, Ridgewell CE Primary, St Andrew's CE Primary, St John The Baptist CE Primary, St Margaret's CE Primary, Stanley Drapkin Primary										

Number on Roll (NOR)

Year	NOR
21/22	637
22/23	664
23/24	679
24/25	686
25/26	689

Project Pipeline

School	Year	Description	Places
No expansion projects currently in pipeline			

9. Cressing/ Silver End

Current PAN: 90
Current Capacity: 618

Reception Place Forecast

Year	21/22	22/23	23/24	24/25	25/26	26/27	27/28	28/29	29/30	30/31
+/-	24	10	9	0	-6	-9	-9	-8	-8	-8
Cressing Primary, Silver End Primary										

Number on Roll (NOR)

Year	NOR
21/22	488
22/23	537
23/24	598
24/25	635
25/26	671

Project Pipeline

School	Year	Description	Places
No expansion projects currently in pipeline			

Demand in this group will be closely monitored. Where planned new housing increases demand the relevant financial contribution from developers will be sought, and land for potential school expansion has been secured through S106 agreement.

10. Hatfield Peverel/ Terling

Current PAN: 75
Current Capacity: 525

Reception Place Forecast

Year	21/22	22/23	23/24	24/25	25/26	26/27	27/28	28/29	29/30	30/31
+/-	8	13	0	-3	-4	-6	-7	-7	-7	-7
Hatfield Peverel Infant, Hatfield Peverel St Andrew's Junior, Terling CE Primary										

Number on Roll (NOR)

Year	NOR
21/22	461
22/23	493
23/24	546
24/25	560
25/26	573

Project Pipeline

School	Year	Description	Places
No expansion projects currently in pipeline			

Demand in this group will be closely monitored. The planned new school in Braintree Planning Group 1 will provide extra capacity in the wider area from 2023.

Secondary School Planning Groups

1. Braintree

Current PAN: 670
Current Capacity: 3692

Year 7 Place Forecast

Year	21/22	22/23	23/24	24/25	25/26	26/27	27/28	28/29	29/30	30/31
+/-	24	57	41	22	7	18	-15	1	-10	-44
Alec Hunter Academy, Notley High School, Tabor Academy										

Number on Roll (NOR)

Year	NOR
21/22	3,237
22/23	3,372
23/24	3,453
24/25	3,550
25/26	3,638

Project Pipeline

School	Year	Description	Places
No expansion projects currently in pipeline			

2. Witham

Current PAN: 360
Current Capacity: 2200

Year 7 Place Forecast

Year	21/22	22/23	23/24	24/25	25/26	26/27	27/28	28/29	29/30	30/31
+/-	-15	-50	-50	-45	-58	-64	-91	-92	-120	-113
Maltings Academy, New Rickstones Academy										

Number on Roll (NOR)

Year	NOR
21/22	1,938
22/23	2,108
23/24	2,203
24/25	2,286
25/26	2,358

Project Pipeline

School	Year	Description	Places
New Rickstones Academy	22/23	2 form entry expansion	60/300

3. Halstead/ Hedingham/ Coggeshall

Current PAN: 556

Current Capacity: 2968

Year 7 Place Forecast

Year	21/22	22/23	23/24	24/25	25/26	26/27	27/28	28/29	29/30	30/31
+/-	36	21	56	33	89	70	62	69	105	70
Hedingham School, Honywood Community Science School, The Ramsey Academy										

Number on Roll (NOR)

Year	NOR
21/22	2,742
22/23	2,805
23/24	2,807
24/25	2,816
25/26	2,807

Project Pipeline

School	Year	Description	Places
No expansion projects currently in pipeline			

3.1.2 Chelmsford

Primary School Planning Groups

1. Broomfield/ Chelmsford Rural North

Current PAN: 153
Current Capacity: 1043

Reception Place Forecast

Year	21/22	22/23	23/24	24/25	25/26	26/27	27/28	28/29	29/30	30/31
+/-	17	32	15	4	-5	-15	-24	-33	-42	-51

Ford End CE Primary, Great Leighs Primary, Great Waltham CE Primary, Little Waltham CE Primary, Broomfield Primary

Number on Roll (NOR)

Year	NOR
21/22	1,027
22/23	1,023
23/24	1,052
24/25	1,087
25/26	1,142

Project Pipeline

School	Year	Description	Places
New Primary School	25/26	Built with capacity to admit 60 per year, opening with PAN of 30	30/420
Expansion of New Primary School	28/29	1 form entry expansion of the new primary school through increasing the admissions number	30/0

An education site to accommodate a new primary school is included as part of housing development in the Great Leighs area.

2. Rettendon / West Hanningfield

Current PAN: 35
Current Capacity: 244

Reception Place Forecast

Year	21/22	22/23	23/24	24/25	25/26	26/27	27/28	28/29	29/30	30/31
+/-	-8	-11	-18	-20	-20	-21	-21	-21	-22	-22

Rettendon Primary, St Peter's CE Primary

Number on Roll (NOR)

Year	NOR
21/22	272
22/23	311
23/24	346
24/25	358
25/26	364

Project Pipeline

School	Year	Description	Places
New Primary School	22/23	1 form entry new primary school	30/210

ECC has secured a site for a new primary school as part of the St Luke's housing development, which is the main factor in the forecast deficit of places.

3. Springfield

Current PAN: 420
Current Capacity: 3148

Reception Place Forecast

Year	21/22	22/23	23/24	24/25	25/26	26/27	27/28	28/29	29/30	30/31
+/-	61	34	26	11	2	-5	-14	-24	-36	-46
Barnes Farm Infant, Barnes Farm Junior, Beaulieu Park School, The Bishops CE & Catholic Primary, Chancellor Park Primary, Perryfields Infant, Perryfields Junior, Springfield Primary, Tyrrells Primary										

Number on Roll (NOR)

Year	NOR
21/22	2,795
22/23	2,825
23/24	2,904
24/25	2,962
25/26	2,966

Project Pipeline

School	Year	Description	Places
New Primary School	25/26	2 form entry new primary school	60/420

ECC has secured a site for a new primary school as part of the Beaulieu housing development, which is the main factor in the forecast deficit of places.

4. Baddow / Galleywood

Current PAN: 270
Current Capacity: 1929

Reception Place Forecast

Year	21/22	22/23	23/24	24/25	25/26	26/27	27/28	28/29	29/30	30/31
+/-	48	8	14	10	7	5	5	4	3	1
Baddow Hall Infant, Baddow Hall Junior, Beehive Lane Primary, Galleywood Infant, Larkrise Primary, Mildmay Infant, Mildmay Junior, St Michael's CE Junior										

Number on Roll (NOR)

Year	NOR
21/22	1,768
22/23	1,782
23/24	1,806
24/25	1,804
25/26	1,802

Project Pipeline

School	Year	Description	Places
No expansion projects currently in pipeline			

5. Melbourne

Current PAN: 180
Current Capacity: 1246

Reception Place Forecast

Year	21/22	22/23	23/24	24/25	25/26	26/27	27/28	28/29	29/30	30/31
+/-	0	19	-3	-11	-17	-23	-27	-31	-32	-33
Lawford Mead Primary, Newlands Spring Primary, Parkwood Primary, St Pius X Catholic Primary										

Number on Roll (NOR)

Year	NOR
21/22	1,200
22/23	1,220
23/24	1,261
24/25	1,289
25/26	1,340

Project Pipeline

School	Year	Description	Places
New Primary School	24/25	2 form entry new primary school	60/420

ECC has secured a site for a new primary school as part of the West of Chelmsford housing development, which is the main factor in the forecast deficit of places. Delivery of a new school will be dependent on the rate of delivery of new housing and forecasts will be monitored closely.

6. Danbury / Bicknacre / East Hanningfield

Current PAN: 114
Current Capacity: 819

Reception Place Forecast

Year	21/22	22/23	23/24	24/25	25/26	26/27	27/28	28/29	29/30	30/31
+/-	15	45	25	23	22	20	19	18	18	17
Danbury Park Primary, East Hanningfield CE Primary, Priory Primary, St John's CE Primary										

Number on Roll (NOR)

Year	NOR
21/22	753
22/23	709
23/24	680
24/25	666
25/26	651

Project Pipeline

School	Year	Description	Places
No expansion projects currently in pipeline			

7. South Woodham

Current PAN: 239
Current Capacity: 1696

Reception Place Forecast

Year	21/22	22/23	23/24	24/25	25/26	26/27	27/28	28/29	29/30	30/31
+/-	34	40	33	25	18	14	12	10	7	4
Collingwood Primary, Elmwood Primary, St Joseph's Catholic Primary, St Mary's CE Primary, Trinity St Mary's CE Primary, Woodville Primary										

Number on Roll (NOR)

Year	NOR
21/22	1,486
22/23	1,492
23/24	1,480
24/25	1,501
25/26	1,528

Project Pipeline

School	Year	Description	Places
No expansion projects currently in pipeline			

8. Writtle / Roxwell / Highwood

Current PAN: 85
Current Capacity: 595

Reception Place Forecast

Year	21/22	22/23	23/24	24/25	25/26	26/27	27/28	28/29	29/30	30/31
+/-	21	13	12	11	10	10	9	9	9	8
Highwood Primary, Roxwell Primary, Writtle Infant, Writtle Junior										

Number on Roll (NOR)

Year	NOR
21/22	546
22/23	539
23/24	525
24/25	523
25/26	511

Project Pipeline

School	Year	Description	Places
No expansion projects currently in pipeline			

9. Margaretting / Stock

Current PAN: 42
Current Capacity: 280

Reception Place Forecast

Year	21/22	22/23	23/24	24/25	25/26	26/27	27/28	28/29	29/30	30/31
+/-	10	10	8	7	7	7	7	7	6	6
Margaretting CE Primary, Stock CE Primary										

Number on Roll (NOR)

Year	NOR
21/22	273
22/23	267
23/24	257
24/25	252
25/26	248

Project Pipeline

School	Year	Description	Places
No expansion projects currently in pipeline			

10. Chelmsford Central

Current PAN: 480
Current Capacity: 3498

Reception Place Forecast

Year	21/22	22/23	23/24	24/25	25/26	26/27	27/28	28/29	29/30	30/31
+/-	-6	-36	-40	-54	-65	-76	-80	-83	-89	-95
Kings Road Primary, Maltese Road Primary, Meadgate Primary, Moulsham Infant, Moulsham Junior, Oaklands Infant, Our Lady Immaculate Catholic Primary, The Cathedral CE Primary, Trinity Road Primary, Westlands Primary										

Number on Roll (NOR)

Year	NOR
21/22	3,435
22/23	3,491
23/24	3,518
24/25	3,593
25/26	3,675

Project Pipeline

School	Year	Description	Places
Trinity Road Primary	22/23	½ form entry expansion	15/105
To be confirmed	24/25	1 form entry expansion	30/210
To be confirmed	27/28	1 form entry expansion	30/210

11. Boreham (not grouped)

Current PAN: 30
Current Capacity: 236

Reception Place Forecast

Year	21/22	22/23	23/24	24/25	25/26	26/27	27/28	28/29	29/30	30/31
+/-	1	-2	-5	-6	-6	-6	-6	-6	-7	-7
Boreham Primary										

Number on Roll (NOR)

Year	NOR
21/22	230
22/23	241
23/24	231
24/25	231
25/26	237

Project Pipeline

School	Year	Description	Places
No expansion projects currently in pipeline			

Due to the restricted school site at Boreham Primary which prevents expansion demand in this area will be managed alongside Braintree Primary Group 10, and Chelmsford Primary Group 3, where there is already a pattern of pupils taking up school places.

12. Downham (not grouped)

Current PAN: 30
Current Capacity: 252

Reception Place Forecast

Year	21/22	22/23	23/24	24/25	25/26	26/27	27/28	28/29	29/30	30/31
+/-	3	2	-1	-2	-3	-4	-4	-4	-4	-4
Downham Primary										

Number on Roll (NOR)

Year	NOR
21/22	209
22/23	217
23/24	208
24/25	209
25/26	218

Project Pipeline

School	Year	Description	Places
No expansion projects currently in pipeline			

Secondary School Planning Groups

1. Chelmsford

Current PAN: 2042
Current Capacity: 12,677

Year 7 Place Forecast

Year	21/22	22/23	23/24	24/25	25/26	26/27	27/28	28/29	29/30	30/31
+/-	181	44	91	139	146	133	98	201	160	110
The Boswells School, Beaulieu Park School, Chelmer Valley High School, Chelmsford County High, Great Baddow High School, Hylands School, King Edward VI, Moulsham High School, The Sandon School, St John Payne Catholic School										

Number on Roll (NOR)

Year	NOR
21/22	11,468
22/23	11,749
23/24	11,948
24/25	11,972
25/26	12,011

Project Pipeline

School	Year	Description	Places
No expansion projects currently in pipeline			

Beaulieu Park School was built with additional capacity to enable it to expand as the Beaulieu housing development grows and local demand increases.

2. Woodham / Burnham (Chelmsford and Maldon)

Current PAN: 405
Current Capacity: 3126

Year 7 Place Forecast

Year	21/22	22/23	23/24	24/25	25/26	26/27	27/28	28/29	29/30	30/31
+/-	-65	7	-55	-51	-32	-27	-17	-29	-16	-29
William De Ferrers School, Ormiston Rivers Academy										

Number on Roll (NOR)

Year	NOR
21/22	2,464
22/23	2,486
23/24	2,552
24/25	2,590
25/26	2,621

Project Pipeline

School	Year	Description	Places
Ormiston Rivers	23/24	1 form entry expansion	30/150

3.1.3 Maldon

Primary School Planning Groups

1. Tollesbury / Tollshunt D'Arcy

Current PAN: 60
Current Capacity: 435

Reception Place Forecast

Year	21/22	22/23	23/24	24/25	25/26	26/27	27/28	28/29	29/30	30/31
+/-	26	13	20	18	18	17	17	17	17	16
Tollesbury Primary, Tollshunt D'Arcy St Nicholas CE Primary										

Number on Roll (NOR)

Year	NOR
21/22	309
22/23	301
23/24	298
24/25	296
25/26	287

Project Pipeline

School	Year	Description	Places
No expansion projects currently in pipeline			

2. Maldon / Heybridge

Current PAN: 302
Current Capacity: 2246

Reception Place Forecast

Year	21/22	22/23	23/24	24/25	25/26	26/27	27/28	28/29	29/30	30/31
+/-	30	18	14	-4	-18	-33	-52	-62	-70	-76
All Saints CE Primary, Great Totham Primary, Heybridge Primary, Maldon Primary, St Francis Catholic Primary, Wentworth Primary, Woodham Walter CE Primary										

Number on Roll (NOR)

Year	NOR
21/22	1,994
22/23	2,029
23/24	2,058
24/25	2,120
25/26	2,206

Project Pipeline

School	Year	Description	Places
New Primary School	24/25	2 form entry new primary school	60/420
New Primary School	27/28	2 form entry new primary schools	60/420

ECC has secured sites for new primary schools through S106 agreements on developments at Limebrook Way and in Heybridge.

3. Burnham / Southminster

Current PAN: 135

Current Capacity: 945

Reception Place Forecast

Year	21/22	22/23	23/24	24/25	25/26	26/27	27/28	28/29	29/30	30/31
+/-	27	13	9	3	1	0	-2	-1	-2	-2
Burnham-on-Crouch Primary, Southminster CE Primary, St Mary's CE Primary										

Number on Roll (NOR)

Year	NOR
21/22	834
22/23	881
23/24	902
24/25	920
25/26	931

Project Pipeline

School	Year	Description	Places
No expansion projects currently in pipeline			

4. Maylandsea / Purleigh / Latchingdon / Cold Norton

Current PAN: 106

Current Capacity: 842

Reception Place Forecast

Year	21/22	22/23	23/24	24/25	25/26	26/27	27/28	28/29	29/30	30/31
+/-	13	13	6	4	3	2	1	1	1	0
Cold Norton Primary, Latchingdon CE Primary, Maylandsea Primary, Purleigh Primary										

Number on Roll (NOR)

Year	NOR
21/22	732
22/23	752
23/24	747
24/25	730
25/26	718

Project Pipeline

School	Year	Description	Places
No expansion projects currently in pipeline			

5. Bradwell / Tillingham

Current PAN: 50
Current Capacity: 315

Reception Place Forecast

Year	21/22	22/23	23/24	24/25	25/26	26/27	27/28	28/29	29/30	30/31
+/-	20	14	19	18	18	17	16	17	16	16
St Cedd's CE Primary, St Nicholas CE Primary										

Number on Roll (NOR)

Year	NOR
21/22	238
22/23	240
23/24	240
24/25	227
25/26	221

Project Pipeline

School	Year	Description	Places
No expansion projects currently in pipeline			

Secondary School Planning Groups

South Woodham Ferrers/ Burnham (see Chelmsford)

1. Maldon (not grouped)

Current PAN: 295
Current Capacity: 1841

Year 7 Place Forecast

Year	21/22	22/23	23/24	24/25	25/26	26/27	27/28	28/29	29/30	30/31
+/-	-4	-10	11	-24	-13	13	-16	-23	-44	-42
The Plume School										

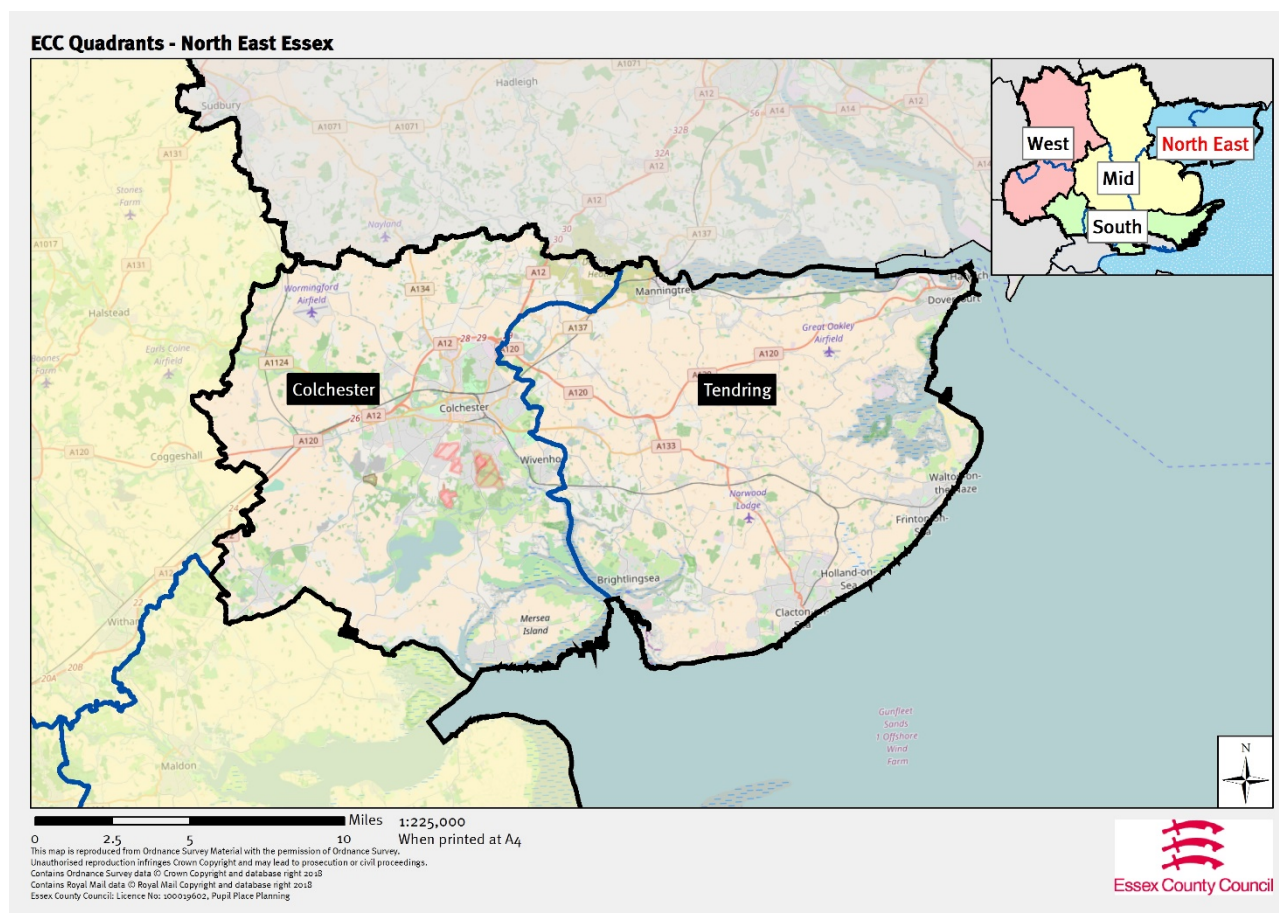
Number on Roll (NOR)

Year	NOR
21/22	1,994
22/23	2,029
23/24	2,058
24/25	2,120
25/26	2,206

Project Pipeline

School	Year	Description	Places
The Plume School	22/23	2 form entry expansion	60/300

3.2 North East Essex



For the purposes of school organisation and place planning North East Essex is Colchester Borough and Tendring District.

A feature of the emerging local plans in this quadrant is a large new Garden Community on the Colchester / Tendring border.

3.2.1 Colchester

Primary School Planning Groups

1. Colchester north

Current PAN: 585
Current Capacity: 4126

Reception Place Forecast

Year	21/22	22/23	23/24	24/25	25/26	26/27	27/28	28/29	29/30	30/31
+/-	40	76	33	11	-4	-16	-30	-38	-42	-44
The Bishop William Ward CE Primary, Braiswick Primary, Brinkley Grove Primary, Camulos Primary, Friars Grove Primary, Heathlands CE Primary, Highwoods Primary, Myland Primary, North Primary, Queen Boudica Primary, St John's CE Primary										

Number on Roll (NOR)

Year	NOR
21/22	3,928
22/23	3,958
23/24	3,968
24/25	4,044
25/26	4,085

Project Pipeline

School	Year	Description	Places
Trinity School	25/26	2 form entry primary provision	60/420

Trinity School is an all-through free school currently in the pre-opening phase. It is due to open in September 2021, admitting pupils into Year 7, and will expand to admit primary age pupils into Reception in line with local demand.

2. Colchester rural northwest

Current PAN: 94
Current Capacity: 661

Reception Place Forecast

Year	21/22	22/23	23/24	24/25	25/26	26/27	27/28	28/29	29/30	30/31
+/-	25	13	16	13	12	11	9	7	6	6
Chappel CE Primary, Fordham All Saints CE Primary, Great Tey CE Primary, Holy Trinity CE Primary, St Andrew's CE Primary										

Number on Roll (NOR)

Year	NOR
21/22	557
22/23	561
23/24	567
24/25	577
25/26	572

Project Pipeline

School	Year	Description	Places
No expansion projects currently in pipeline.			

3. Tiptree

Current PAN: 132

Current Capacity: 969

Reception Place Forecast

Year	21/22	22/23	23/24	24/25	25/26	26/27	27/28	28/29	29/30	30/31
+/-	35	18	21	19	19	18	17	16	15	15
Baynards Primary, Messing Primary, Milldene Primary, Tiptree Heath Primary, St Luke's CE Primary										

Number on Roll (NOR)

Year	NOR
21/22	792
22/23	807
23/24	784
24/25	782
25/26	783

Project Pipeline

School	Year	Description	Places
No expansion projects currently in pipeline			

4. Colchester rural southwest

Current PAN: 50

Current Capacity: 350

Reception Place Forecast

Year	21/22	22/23	23/24	24/25	25/26	26/27	27/28	28/29	29/30	30/31
+/-	12	10	10	10	9	9	8	7	6	6
Birch CE Primary, Layer-De-La-Haye CE Primary										

Number on Roll (NOR)

Year	NOR
21/22	334
22/23	323
23/24	310
24/25	299
25/26	291

Project Pipeline

School	Year	Description	Places
No expansion projects currently in pipeline			

5. Colchester southwest and Stanway

Current PAN: 525
Current Capacity: 3607

Reception Place Forecast

Year	21/22	22/23	23/24	24/25	25/26	26/27	27/28	28/29	29/30	30/31
+/-	90	106	59	44	37	28	15	4	-4	-9
Copford CE Primary, Gosbecks Primary, Hamilton Primary, Home Farm Primary, Lakelands Primary, Lexden Primary, Prettygate Infant, Prettygate Junior, St Teresa's Catholic Primary, Stanway Fiveways Primary, Stanway Primary										

Number on Roll (NOR)

Year	NOR
21/22	2,937
22/23	2,958
23/24	2,990
24/25	3,001
25/26	2,992

Project Pipeline

School	Year	Description	Places
No expansion projects currently in pipeline			

Although forecasts indicate there will be a significant surplus of places in the Reception cohort for the next two or three years we expect these cohorts to increase in size as they move through primary school, due to additional housing being built in the area. This pattern of inward migration has been seen in the area over previous years.

6. Colchester east

Current PAN: 210
Current Capacity: 1470

Reception Place Forecast

Year	21/22	22/23	23/24	24/25	25/26	26/27	27/28	28/29	29/30	30/31
+/-	32	57	37	31	27	22	16	11	6	0
Hazelmere Infant, Hazelmere Junior, Parsons Heath CE Primary, Roach Vale Primary, Unity Primary, Willow Brook Primary										

Number on Roll (NOR)

Year	NOR
21/22	1,281
22/23	1,248
23/24	1,237
24/25	1,257
25/26	1,244

Project Pipeline

School	Year	Description	Places
No expansion projects currently in pipeline			

7. Wivenhoe

Current PAN: 90
Current Capacity: 653

Reception Place Forecast

Year	21/22	22/23	23/24	24/25	25/26	26/27	27/28	28/29	29/30	30/31
+/-	11	19	12	11	11	9	6	3	-1	-2
Broomgrove Infant, Broomgrove Junior, Millfields Primary										

Number on Roll (NOR)

Year	NOR
21/22	616
22/23	604
23/24	600
24/25	565
25/26	552

Project Pipeline

School	Year	Description	Places
No expansion projects currently in pipeline			

8. Colchester south and southeast

Current PAN: 660
Current Capacity: 4592

Reception Place Forecast

Year	21/22	22/23	23/24	24/25	25/26	26/27	27/28	28/29	29/30	30/31
+/-	99	68	81	71	65	54	39	27	16	5
Cherry Tree Primary, Icen Primary, Kendall CE Primary, King's Ford Infant, Monkwick Infant, Monkwick Junior, Montgomery Infant, Montgomery Junior, Old Heath Primary, St George's School , St James' CE Primary, St John's Green Primary, St Michael's CE Primary, St Thomas More's Catholic Primary										

Number on Roll (NOR)

Year	NOR
21/22	4,034
22/23	4,050
23/24	4,042
24/25	4,082
25/26	4,062

Project Pipeline

School	Year	Description	Places
No expansion projects currently in pipeline			

9. Colchester rural south

Current PAN: 67
Current Capacity: 481

Reception Place Forecast

Year	21/22	22/23	23/24	24/25	25/26	26/27	27/28	28/29	29/30	30/31
+/-	-6	1	2	1	1	-1	-2	-4	-5	-6
Fingringhoe Primary, Langenhoe Primary, St Lawrence CE Primary										

Number on Roll (NOR)

Year	NOR
21/22	476
22/23	486
23/24	488
24/25	485
25/26	483

Project Pipeline

School	Year	Description	Places
No expansion projects currently in pipeline			

The schools in this rural planning group attract a significant number of pupils from outside the area. Although small deficits are forecast it is expected that all local children will have a place in one of the schools in the group.

10. Colchester rural northeast

Current PAN: 76
Current Capacity: 531

Reception Place Forecast

Year	21/22	22/23	23/24	24/25	25/26	26/27	27/28	28/29	29/30	30/31
+/-	6	13	7	5	5	4	2	2	1	1
Boxted St Peter's CE Primary, Dedham CE Primary, Langham Primary										

Number on Roll (NOR)

Year	NOR
21/22	513
22/23	504
23/24	501
24/25	498
25/26	502

Project Pipeline

School	Year	Description	Places
No expansion projects currently in pipeline			

11. Mersea (not grouped)

Current PAN: 60
Current Capacity: 450

Reception Place Forecast

Year	21/22	22/23	23/24	24/25	25/26	26/27	27/28	28/29	29/30	30/31
+/-	5	15	13	11	9	8	6	4	4	3
Mersea Island Primary										

Number on Roll (NOR)

Year	NOR
21/22	370
22/23	359
23/24	349
24/25	357
25/26	367

Project Pipeline

School	Year	Description	Places
No expansion projects currently in pipeline			

Secondary School Planning Groups

1. Colchester

Current PAN: 2220
Current Capacity: 11330

Year 7 Place Forecast

Year	21/22	22/23	23/24	24/25	25/26	26/27	27/28	28/29	29/30	30/31
+/-	59	94	-58	67	3	96	91	78	147	50
Colchester Academy, Colchester County High School, Colchester Royal Grammar School, The Gilbert School, Philip Morant School, St Benedict's Catholic College, St Helena School, The Stanway School, The Thomas Lord Audley School										

Number on Roll (NOR)

Year	NOR
21/22	11,117
22/23	11,448
23/24	11,903
24/25	12,072
25/26	12,188

Project Pipeline

School	Year	Description	Places
Trinity School	21/22	4 form entry new secondary school	120/240
Trinity School	23/24	2 form entry expansion	60/660

Trinity school is an all-through Free School in the pre-opening phase. It is due to open to admit pupils into Year 7 from September 2021. The demand for this new school is being driven by major housing development in north Colchester.

2. Thurstable (not grouped)

Current PAN: 210
Current Capacity: 1275

Year 7 Place Forecast

Year	21/22	22/23	23/24	24/25	25/26	26/27	27/28	28/29	29/30	30/31
+/-	-14	5	-18	-15	11	-9	-2	4	-8	-10
Thurstable School										

Number on Roll (NOR)

Year	NOR
21/22	1,247
22/23	1,260
23/24	1,274
24/25	1,287
25/26	1,269

Project Pipeline

School	Year	Description	Places
No expansion projects currently in pipeline			

3.2.2 Tendring

Primary School Planning Groups

1. Little Clacton / Tendring / Thorpe / Weeley

Current PAN: 118

Current Capacity: 832

Reception Place Forecast

Year	21/22	22/23	23/24	24/25	25/26	26/27	27/28	28/29	29/30	30/31
+/-	9	12	3	1	-2	-6	-11	-15	-19	-24
Engaines Primary, Rolph CE Primary, Tendring Primary, Weeley St Andrew's CE Primary										

Number on Roll (NOR)

Year	NOR
21/22	833
22/23	842
23/24	842
24/25	845
25/26	856

Project Pipeline

School	Year	Description	Places
Tendring Primary	23/24	Small expansion	10/70

2. Clacton

Current PAN: 645

Current Capacity: 4660

Reception Place Forecast

Year	21/22	22/23	23/24	24/25	25/26	26/27	27/28	28/29	29/30	30/31
+/-	70	80	73	64	57	46	38	33	27	21
Alton Park Junior, Burrsville Infant, Cann Hall Primary, Sir Martin Frobisher Academy, Great Clacton CE Junior, Holland Haven Primary, Holland Park Primary, The Oakwood Infant, Ravens Primary, St Clare's Catholic Primary, St Osyth CE Primary, White Hall Primary										

Number on Roll (NOR)

Year	NOR
21/22	4,302
22/23	4,231
23/24	4,152
24/25	4,149
25/26	4,135

Project Pipeline

School	Year	Description	Places
No expansion projects currently in pipeline			

There is a significant amount of new housing planned for Clacton. Sites for new primary schools will be secured through S106 agreements as major housing developments progress and demand for primary school places increases.

3. Brightlingsea / Elmstead

Current PAN: 197
Current Capacity: 1436

Reception Place Forecast

Year	21/22	22/23	23/24	24/25	25/26	26/27	27/28	28/29	29/30	30/31
+/-	19	23	5	-1	-6	-10	-15	-21	-26	-32
Alesford Primary, Brightlingsea Infant, Brightlingsea Junior, Elmstead Primary, Great Bentley Primary, St George's CE Primary										

Number on Roll (NOR)

Year	NOR
21/22	1,408
22/23	1,453
23/24	1,462
24/25	1,460
25/26	1,459

Project Pipeline

School	Year	Description	Places
tbc	24/25	1 form entry expansion	30/210

4. Frinton / Walton

Current PAN: 150
Current Capacity: 1038

Reception Place Forecast

Year	21/22	22/23	23/24	24/25	25/26	26/27	27/28	28/29	29/30	30/31
+/-	22	22	11	7	2	-3	-6	-8	-8	-9
Frinton-on-Sea Primary, Hamford Primary, Kirby Primary, Walton-on-the-Naze Primary										

Number on Roll (NOR)

Year	NOR
21/22	955
22/23	974
23/24	1,000
24/25	1,023
25/26	1,041

Project Pipeline

School	Year	Description	Places
No expansion projects currently in pipeline			

The expansion of Hamford Primary has created some capacity in the group in the short to medium term, which is essential for families moving into the new housing in the area. Options for the longer term have been assessed and pupil numbers will be monitored carefully to ensure that additional places are provided when necessary.

5. Harwich

Current PAN: 277
Current Capacity: 1936

Reception Place Forecast

Year	21/22	22/23	23/24	24/25	25/26	26/27	27/28	28/29	29/30	30/31
+/-	45	55	34	31	28	23	21	18	15	12
All Saints CE Primary (Dovercourt), Chase Lane Primary, Harwich Primary, The Mayflower Primary, Spring Meadow Primary, St Joseph's Catholic Primary, Two Village CE Primary										

Number on Roll (NOR)

Year	NOR
21/22	1,788
22/23	1,776
23/24	1,794
24/25	1,772
25/26	1,756

Project Pipeline

School	Year	Description	Places
No expansion projects currently in pipeline			

6. Manningtree and surrounds

Current PAN: 110
Current Capacity: 770

Reception Place Forecast

Year	21/22	22/23	23/24	24/25	25/26	26/27	27/28	28/29	29/30	30/31
+/-	2	-2	-2	-6	-11	-17	-21	-24	-27	-29
The Plume School										

Number on Roll (NOR)

Year	NOR
21/22	739
22/23	775
23/24	800
24/25	823
25/26	859

Project Pipeline

School	Year	Description	Places
Lawford Primary	21/22	1 form entry expansion	30/210

7. Tendring rural north

Current PAN: 54
Current Capacity: 341

Reception Place Forecast

Year	21/22	22/23	23/24	24/25	25/26	26/27	27/28	28/29	29/30	30/31
+/-	13	17	12	11	11	11	11	11	10	10
All Saints CE Primary (Gt Oakley), Bradfield Primary, Wix & Wrabness										

Number on Roll (NOR)

Year	NOR
21/22	326
22/23	321
23/24	320
24/25	317
25/26	314

Project Pipeline

School	Year	Description	Places
No expansion projects currently in pipeline			

Secondary School Planning Groups

1. Clacton

Current PAN: 879
Current Capacity: 5065

Year 7 Place Forecast

Year	21/22	22/23	23/24	24/25	25/26	26/27	27/28	28/29	29/30	30/31
+/-	-22	-62	-56	27	-26	25	70	22	43	25
Clacton Coastal Academy, Clacton County High School, Tendring Technology College										

Number on Roll (NOR)

Year	NOR
21/22	4,998
22/23	5,153
23/24	5,295
24/25	5,313
25/26	5,367

Project Pipeline

School	Year	Description	Places
Clacton County High School	21/22	2 form entry expansion	58/290

2. Colne (not grouped)

Current PAN: 248
Current Capacity: 1488

Year 7 Place Forecast

Year	21/22	22/23	23/24	24/25	25/26	26/27	27/28	28/29	29/30	30/31
+/-	-7	9	-21	-15	-16	-3	16	11	32	16
Colne Community School & College										

Number on Roll (NOR)

Year	NOR
21/22	1,276
22/23	1,282
23/24	1,320
24/25	1,334
25/26	1,350

Project Pipeline

School	Year	Description	Places
Colne	21/22	1 form entry expansion	30/150

3. Harwich (not grouped)

Current PAN: 224
Current Capacity: 1433

Year 7 Place Forecast

Year	21/22	22/23	23/24	24/25	25/26	26/27	27/28	28/29	29/30	30/31
+/-	10	-5	17	-8	-21	-13	-17	2	10	-6
Harwich and Dovercourt High School										

Number on Roll (NOR)

Year	NOR
21/22	1,162
22/23	1,191
23/24	1,178
24/25	1,186
25/26	1,215

Project Pipeline

School	Year	Description	Places
No expansion projects currently in pipeline			

4. Manningtree (not grouped)

Current PAN: 174
Current Capacity: 870

Year 7 Place Forecast

Year	21/22	22/23	23/24	24/25	25/26	26/27	27/28	28/29	29/30	30/31
+/-	20	-1	-3	16	6	-4	9	9	1	1
Manningtree High School										

Number on Roll (NOR)

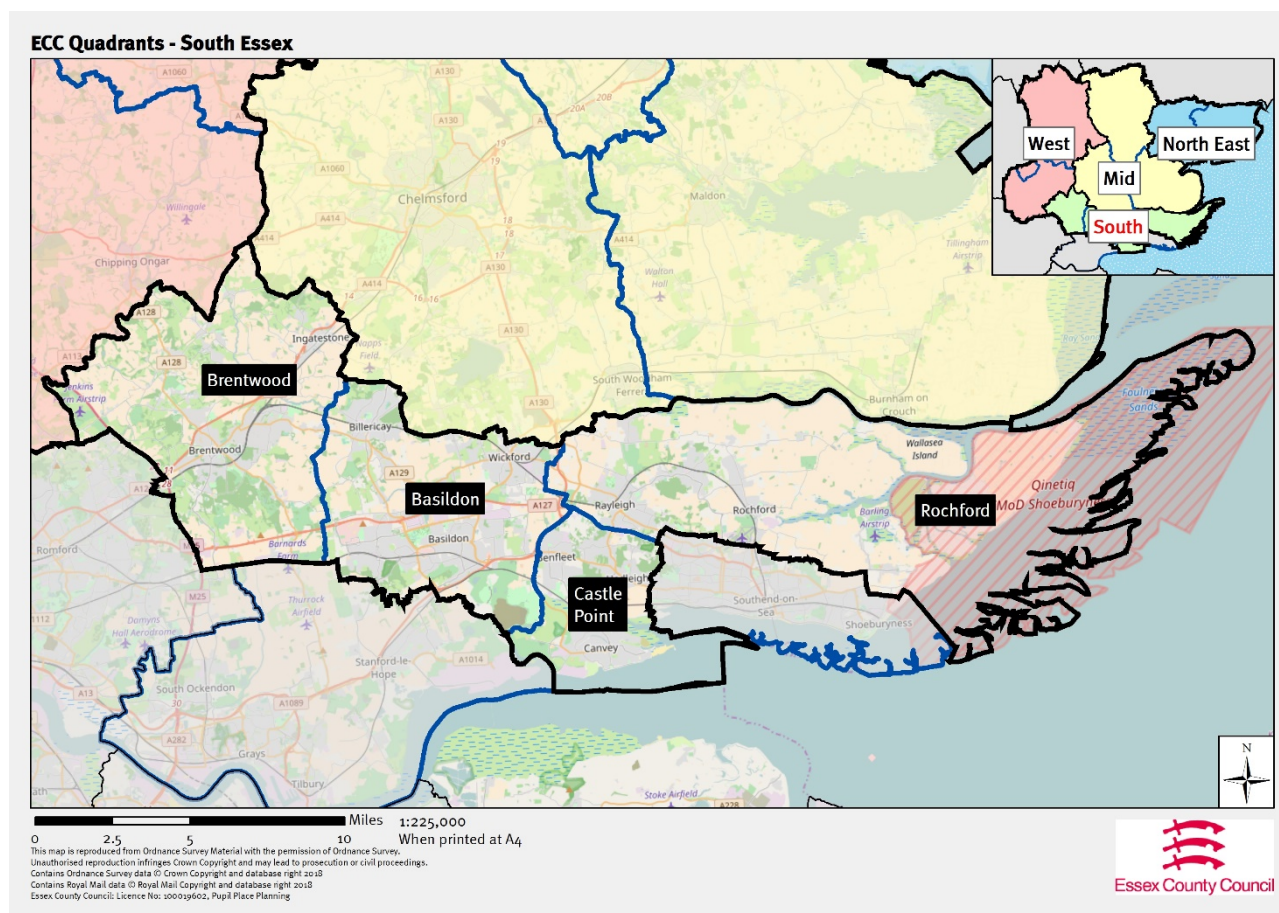
Year	NOR
21/22	858
22/23	873
23/24	878
24/25	864
25/26	862

Project Pipeline

School	Year	Description	Places
No expansion projects currently in pipeline			

An expansion project was completed at Manningtree High in summer 2020 which will increase the PAN and ensure that all local children who want one will have a place at the school.

3.3 South Essex



For the purposes of school organisation and place planning South Essex is Basildon, Brentwood, Castle Point and Rochford districts and boroughs. The demand for school places in this quadrant is influenced considerably by cross-border pupil movement as it borders Greater London, Southend, and Thurrock authorities.

At the time the forecasts for this document were created none of the authorities had adopted Local Development Plans.

3.3.1 Basildon

Primary School Planning Groups

1. Billericay

Current PAN: 450
Current Capacity: 3223

Reception Place Forecast

Year	21/22	22/23	23/24	24/25	25/26	26/27	27/28	28/29	29/30	30/31
+/-	3	61	30	24	21	20	11	3	-4	-14

Brightside Primary, Buttsbury Infant, Buttsbury Junior, Quilters Infant, Quilters Junior, South Green Infant, South Green Junior School, St Peter's Catholic Primary, Sunnymede Infant, Sunnymede Junior

Number on Roll (NOR)

Year	NOR
21/22	3,070
22/23	3,034
23/24	3,026
24/25	2,998
25/26	3,021

Project Pipeline

School	Year	Description	Places
New Primary School	28/29	2 form entry new primary school	60/420

A site for a new primary school is included in plans for major housing development in Billericay. Progress of this housing, and demand for school places, will be monitored closely to ensure a new school is opened to serve the local need.

2. Wickford / Runwell

Current PAN: 435
Current Capacity: 3069

Reception Place Forecast

Year	21/22	22/23	23/24	24/25	25/26	26/27	27/28	28/29	29/30	30/31
+/-	19	58	18	11	7	6	-1	-9	-16	-24

Abacus Primary, Grange Primary, Hilltop Infant, Hilltop Junior, North Crescent Primary, Oakfield Primary, Runwell Primary, The Wickford CE Infant, Wickford Primary

Number on Roll (NOR)

Year	NOR
21/22	2,895
22/23	2,892
23/24	2,932
24/25	2,955
25/26	2,958

Project Pipeline

School	Year	Description	Places
Wickford Primary School and Wickford CE Infant	27/28	Expansion of both schools to create additional KS1 at Wickford Primary and KS2 capacity at Wickford CE Infant (which will expand its age range to become a primary)	30/210

3. Basildon central and west

Current PAN: 1380

Current Capacity: 9415

Reception Place Forecast

Year	21/22	22/23	23/24	24/25	25/26	26/27	27/28	28/29	29/30	30/31
+/-	88	92	46	17	4	2	-9	-23	-36	-49
Bardfield Primary, Cherry Tree Primary, Fairhouse Primary, Ghyllgrove Primary, Great Berry Primary, Greensted Infant, Greensted Junior, Janet Duke Primary, Kingswood Primary, Laindon Park Primary, Lee Chapel Primary, Lincewood Primary, Merrylands Primary, Millhouse Primary, Noak Bridge Primary, Phoenix Primary, Ryedene Primary, St Anne Line Catholic Infant, St Anne Line Catholic Junior, St Teresa's Catholic Primary, Vange Primary, Whitmore Primary, Willows Primary										

Number on Roll (NOR)

Year	NOR
21/22	9,231
22/23	9,350
23/24	9,407
24/25	9,490
25/26	9,578

Project Pipeline

School	Year	Description	Places
New Primary School	24/25	2 form entry new primary school at Dry Street	60/420

Plans for major housing development in Vange will create the need to expand primary capacity in the area. Progress of this housing, and demand for school places, will be monitored closely to ensure capacity is increased to serve the local need.

A site for a new primary school is included in the emerging Local Plan at Gardiners Lane South, to enable another new primary school to meet forecast demand for new places as a result of new housing.

5. Basildon east

Current PAN: 315
Current Capacity: 2250

Reception Place Forecast

Year	21/22	22/23	23/24	24/25	25/26	26/27	27/28	28/29	29/30	30/31
+/-	30	32	16	12	11	12	12	10	6	1
Briscoe Primary, Eversley Primary, Felmore Primary, Northlands Primary, Maple Grove Primary, St Margaret's CE Primary										

Number on Roll (NOR)

Year	NOR
21/22	2,200
22/23	2,183
23/24	2,163
24/25	2,134
25/26	2,117

Project Pipeline

School	Year	Description	Places
New Primary School	30/31	2 form entry new primary school	60/420

A site for a new primary school is included with plans for major housing development east of Basildon. Progress of this housing, and demand for school places, will be monitored closely to ensure a new school is opened to serve the local need.

6. Crays Hill (not grouped)

Current PAN: 15
Current Capacity: 105

Reception Place Forecast

Year	21/22	22/23	23/24	24/25	25/26	26/27	27/28	28/29	29/30	30/31
+/-	-4	-4	-2	-2	-5	-5	-5	-5	-5	-5
Crays Hill Primary										

Number on Roll (NOR)

Year	NOR
21/22	99
22/23	108
23/24	111
24/25	112
25/26	130

Project Pipeline

School	Year	Description	Places
No expansion projects currently in pipeline			

Pupil growth at Crays Hill Primary is driven by an increase in the number of existing pupils from the wider Basildon area attending the school rather than an increase in population. Demand for school places will be monitored closely to ensure any population growth is addressed.

Secondary School Planning Groups

1. Basildon

Current PAN: 1110

Current Capacity: 5900

Year 7 Place Forecast

Year	21/22	22/23	23/24	24/25	25/26	26/27	27/28	28/29	29/30	30/31
+/-	107	69	-27	-9	-1	-13	-62	-18	-20	-74
Basildon Lower Academy, Basildon Upper Academy, De La Salle School, The James Hornsby School, Woodlands School										

Number on Roll (NOR)

Year	NOR
21/22	4,874
22/23	5,078
23/24	5,355
24/25	5,531
25/26	5,718

Project Pipeline

School	Year	Description	Places
tbc	26/27	1 form entry expansion	30/150

The Local Plan includes a site for a new secondary school east of Basildon. A new school will be required to meet long term demand arising from new housing, and the timing of expansion and the new school will be considered carefully.

2. Billericay

Current PAN: 550

Current Capacity: 3293

Year 7 Place Forecast

Year	21/22	22/23	23/24	24/25	25/26	26/27	27/28	28/29	29/30	30/31
+/-	-2	6	0	-9	37	31	8	-3	59	10
The Billericay School, Mayflower High School										

Number on Roll (NOR)

Year	NOR
21/22	3,365
22/23	3,375
23/24	3,398
24/25	3,402
25/26	3,368

Project Pipeline

School	Year	Description	Places
No expansion projects currently in pipeline			

3. Wickford

Current PAN: 472
Current Capacity: 2741

Year 7 Place Forecast

Year	21/22	22/23	23/24	24/25	25/26	26/27	27/28	28/29	29/30	30/31
+/-	23	-9	-16	0	-29	-28	-42	-37	-10	-43
Beauchamps High School, The Bromfords School										

Number on Roll (NOR)

Year	NOR
21/22	2,652
22/23	2,724
23/24	2,784
24/25	2,785
25/26	2,808

Project Pipeline

School	Year	Description	Places
tbc	26/27	1 form entry expansion	30/150

3.3.2 Brentwood

Primary School Planning Groups

1. Brentwood Town

Current PAN: 723
Current Capacity: 4928

Reception Place Forecast

Year	21/22	22/23	23/24	24/25	25/26	26/27	27/28	28/29	29/30	30/31
+/-	97	95	71	63	61	51	43	36	34	32
Bentley St Paul's CE Primary, Hogarth Primary, Holly Trees Primary, Hutton All Saints' CE Primary , Ingrave Johnstone CE Primary, Larchwood Primary, Long Ridings Primary, St Helen's Catholic Junior, St Helen's Catholic Infant , St Joseph the Worker Catholic Primary, St Mary's CE Primary, St Peter's CE Primary, St Thomas of Canterbury CE Infant, St Thomas of Canterbury CE Junior, Warley Primary, Willowbrook Primary										

Number on Roll (NOR)

Year	NOR
21/22	4,736
22/23	4,741
23/24	4,724
24/25	4,699
25/26	4,728

Project Pipeline

School	Year	Description	Places
No expansion projects currently in pipeline			

Delivery of new housing has been slower than expected in this area, however growth is being monitored and plans will adjust where necessary. A new primary school is expected to be required in Shenfield when housing starts to increase in that area.

2. Ingatestone / Mountnessing

Current PAN: 60
Current Capacity: 420

Reception Place Forecast

Year	21/22	22/23	23/24	24/25	25/26	26/27	27/28	28/29	29/30	30/31
+/-	2	-9	-7	-10	-11	-11	-11	-11	-10	-10
Ingatestone CE Infant, Ingatestone Junior, Mountnessing CE Primary										

Number on Roll (NOR)

Year	NOR
21/22	440
22/23	447
23/24	469
24/25	492
25/26	505

Project Pipeline

School	Year	Description	Places
Mountnessing Primary	21/22	½ form entry expansion	15/105

3. Doddinghurst / Kelvedon Hatch

Current PAN: 115

Current Capacity: 810

Reception Place Forecast

Year	21/22	22/23	23/24	24/25	25/26	26/27	27/28	28/29	29/30	30/31
+/-	11	34	17	16	16	16	16	16	17	17
Blackmore Primary, Doddinghurst Infant, Doddinghurst CE Junior, Kelvedon Hatch Primary										

Number on Roll (NOR)

Year	NOR
21/22	735
22/23	721
23/24	715
24/25	720
25/26	705

Project Pipeline

School	Year	Description	Places
No expansion projects currently in pipeline			

4. West Horndon (not grouped)

Current PAN: 30

Current Capacity: 210

Reception Place Forecast

Year	21/22	22/23	23/24	24/25	25/26	26/27	27/28	28/29	29/30	30/31
+/-	2	12	7	2	-5	-14	-25	-37	-49	-61
West Horndon Primary										

Number on Roll (NOR)

Year	NOR
21/22	173
22/23	175
23/24	184
24/25	209
25/26	252

Project Pipeline

School	Year	Description	Places
New Primary School	25/26	2 form entry new primary school	60/420

A recent expansion at West Horndon Primary has met existing demand from local housing growth. The medium to long term increase in demand for primary school places will result from a new Garden Community (Dunton Village), for which new schools will be provided.

Secondary School Planning Groups

1. Brentwood

Current PAN: 1067

Current Capacity: 6832

Year 7 Place Forecast

Year	21/22	22/23	23/24	24/25	25/26	26/27	27/28	28/29	29/30	30/31
+/-	106	69	39	33	31	-8	23	35	76	31
Becket Keys CE Free School, Brentwood County High School, Brentwood Ursuline Convent High School, Shenfield High School, St Martin's School										

Number on Roll (NOR)

Year	NOR
21/22	6,183
22/23	6,246
23/24	6,331
24/25	6,365
25/26	6,446

Project Pipeline

School	Year	Description	Places
No expansion projects currently in pipeline			

2. Anglo European (not grouped)

Current PAN: 224

Current Capacity: 1460

Year 7 Place Forecast

Year	21/22	22/23	23/24	24/25	25/26	26/27	27/28	28/29	29/30	30/31
+/-	0	-1	9	22	-6	4	-1	17	6	6
Anglo European School										

Number on Roll (NOR)

Year	NOR
21/22	1,442
22/23	1,452
23/24	1,441
24/25	1,420
25/26	1,422

Project Pipeline

School	Year	Description	Places
No expansion projects currently in pipeline			

3.3.3 Castle Point

Primary School Planning Groups

1. Canvey Island

Current PAN: 450
Current Capacity: 3193

Reception Place Forecast

Year	21/22	22/23	23/24	24/25	25/26	26/27	27/28	28/29	29/30	30/31
+/-	44	94	65	57	53	50	46	40	34	28
Canvey Island Infant, Canvey Junior, Leigh Beck Infant, Leigh Beck Junior, Lubbins Park Primary, Northwick Park Primary, St Joseph's Catholic Primary, St Katherine's CE Primary, William Read Primary, Winter Gardens Primary										

Number on Roll (NOR)

Year	NOR
21/22	2,866
22/23	2,792
23/24	2,774
24/25	2,766
25/26	2,779

Project Pipeline

School	Year	Description	Places
No expansion projects currently in pipeline			

2. Thundersley / Benfleet

Current PAN: 420
Current Capacity: 2943

Reception Place Forecast

Year	21/22	22/23	23/24	24/25	25/26	26/27	27/28	28/29	29/30	30/31
+/-	30	37	28	17	1	-13	-24	-36	-46	-52
Kingston Primary, Montgomerie Primary, Robert Drake Primary, Thundersley Primary, Woodham Ley Primary, Holy Family Primary, Jotmans Hall Primary, Kents Hill Infant, Kents Hill Junior, South Benfleet Primary										

Number on Roll (NOR)

Year	NOR
21/22	2,887
22/23	2,838
23/24	2,825
24/25	2,857
25/26	2,922

Project Pipeline

School	Year	Description	Places
tbc	25/26	1 form entry expansion	30/210
New Primary School	28/29	2 form entry new primary school	60/420

3. Hadleigh

Current PAN: 120

Current Capacity: 840

Reception Place Forecast

Year	21/22	22/23	23/24	24/25	25/26	26/27	27/28	28/29	29/30	30/31
+/-	15	0	5	2	-2	-7	-8	-8	-9	-8
Hadleigh Infant, Hadleigh Junior School, Westwood Primary										

Number on Roll (NOR)

Year	NOR
21/22	785
22/23	793
23/24	794
24/25	814
25/26	850

Project Pipeline

School	Year	Description	Places
No expansion projects currently in pipeline			

Mobility between Hadleigh and the Thundersley/Benfleet area is fluid and is constantly monitored to address local demand. Increases in capacity will be addressed as required.

Secondary School Planning Groups

1. Benfleet

Current PAN: 740
Current Capacity: 4450

Year 7 Place Forecast

Year	21/22	22/23	23/24	24/25	25/26	26/27	27/28	28/29	29/30	30/31
+/-	2	-1	19	23	-5	14	14	32	22	6
The Appleton School, The Deanes, The King John School										

Number on Roll (NOR)

Year	NOR
21/22	4,361
22/23	4,361
23/24	4,390
24/25	4,381
25/26	4,443

Project Pipeline

School	Year	Description	Places
No expansion projects currently in pipeline			

2. Canvey Island

Current PAN: 420
Current Capacity: 2100

Year 7 Place Forecast

Year	21/22	22/23	23/24	24/25	25/26	26/27	27/28	28/29	29/30	30/31
+/-	33	41	47	36	80	61	72	61	92	66
Castle View School, Cornelius Vermuyden										

Number on Roll (NOR)

Year	NOR
21/22	1,817
22/23	1,836
23/24	1,880
24/25	1,885
25/26	1,883

Project Pipeline

School	Year	Description	Places
No expansion projects currently in pipeline			

3.3.4 Rochford

Primary School Planning Groups

1. Rayleigh

Current PAN: 425
Current Capacity: 3098

Reception Place Forecast

Year	21/22	22/23	23/24	24/25	25/26	26/27	27/28	28/29	29/30	30/31
+/-	65	71	58	49	43	34	28	22	19	17
Down Hall Primary, Edward Francis Primary, Glebe Primary, Grove Wood Primary, Our Lady of Ransom Catholic Primary, Rayleigh Primary, St Nicholas CE Primary, Wyburns Primary										

Number on Roll (NOR)

Year	NOR
21/22	2,747
22/23	2,734
23/24	2,729
24/25	2,719
25/26	2,672

Project Pipeline

School	Year	Description	Places
No expansion projects currently in pipeline			

A site for primary education provision has been secured through a S106 agreement at the London Road development. Housing development will be monitored to determine when additional primary school capacity is required.

2. Rochford

Current PAN: 180
Current Capacity: 1262

Reception Place Forecast

Year	21/22	22/23	23/24	24/25	25/26	26/27	27/28	28/29	29/30	30/31
+/-	17	3	4	-2	-7	-14	-17	-18	-19	-20
Holt Farm Infant, Holt Farm Junior, Rochford Primary, St Teresa's Catholic Primary, Stambridge Primary, Waterman Primary										

Number on Roll (NOR)

Year	NOR
21/22	1,082
22/23	1,139
23/24	1,200
24/25	1,244
25/26	1,270

Project Pipeline

School	Year	Description	Places
tbc	24/25	1 form entry of additional capacity	30/210

3. Hockley

Current PAN: 225
Current Capacity: 1599

Reception Place Forecast

Year	21/22	22/23	23/24	24/25	25/26	26/27	27/28	28/29	29/30	30/31
+/-	20	42	28	23	21	18	16	15	13	13
Ashingdon Primary, Hockley Primary, Plumberow Primary, Westerings Primary										

Number on Roll (NOR)

Year	NOR
21/22	1,542
22/23	1,502
23/24	1,491
24/25	1,474
25/26	1,444

Project Pipeline

School	Year	Description	Places
No expansion projects currently in pipeline			

4. Barling / Gt Waking

Current PAN: 85
Current Capacity: 595

Reception Place Forecast

Year	21/22	22/23	23/24	24/25	25/26	26/27	27/28	28/29	29/30	30/31
+/-	-1	9	-1	-2	-3	-4	-4	-5	-5	-5
Barling Magna Primary, Great Waking Primary										

Number on Roll (NOR)

Year	NOR
21/22	565
22/23	571
23/24	591
24/25	599
25/26	603

Project Pipeline

School	Year	Description	Places
Barling Magna Primary	21/22	Small expansion	5/35

5. Canewdon (not grouped)

Current PAN: 22
Current Capacity: 157

Reception Place Forecast

Year	21/22	22/23	23/24	24/25	25/26	26/27	27/28	28/29	29/30	30/31
+/-	0	10	4	4	4	4	4	4	4	3
Canewdon Endowed Primary										

Number on Roll (NOR)

Year	NOR
21/22	121
22/23	122
23/24	117
24/25	119
25/26	118

Project Pipeline

School	Year	Description	Places
No expansion projects currently in pipeline			

6. Riverside (not grouped)

Current PAN: 45
Current Capacity: 454

Reception Place Forecast

Year	21/22	22/23	23/24	24/25	25/26	26/27	27/28	28/29	29/30	30/31
+/-	7	0	-7	-12	-14	-15	-15	-15	-16	-16
Riverside Primary										

Number on Roll (NOR)

Year	NOR
21/22	332
22/23	358
23/24	374
24/25	390
25/26	408

Project Pipeline

School	Year	Description	Places
Riverside Primary	22/23	½ form entry expansion	15/0

Secondary School Planning Groups

1. Rayleigh

Current PAN: 548
Current Capacity: 3190

Year 7 Place Forecast

Year	21/22	22/23	23/24	24/25	25/26	26/27	27/28	28/29	29/30	30/31
+/-	-2	59	48	72	35	101	92	95	106	93
The Fitzwimarc School, The Swayne Park School										

Number on Roll (NOR)

Year	NOR
21/22	3,198
22/23	3,170
23/24	3,143
24/25	3,068
25/26	3,032

Project Pipeline

School	Year	Description	Places
The Swayne Park School	21/22	1 form entry expansion	30/150

Swayne Park School increasingly attracts pupils from a wider area and where other schools, particularly in Rochford and Hockley, are responding to high demand, there is a need to create capacity in Rayleigh to address parental preference combined with need in the district.

2. Rochford / Hockley

Current PAN: 495
Current Capacity: 3280

Year 7 Place Forecast

Year	21/22	22/23	23/24	24/25	25/26	26/27	27/28	28/29	29/30	30/31
+/-	-7	-18	-26	-32	-38	-44	-49	-53	-42	-56
Greensward Academy, The King Edmund School										

Number on Roll (NOR)

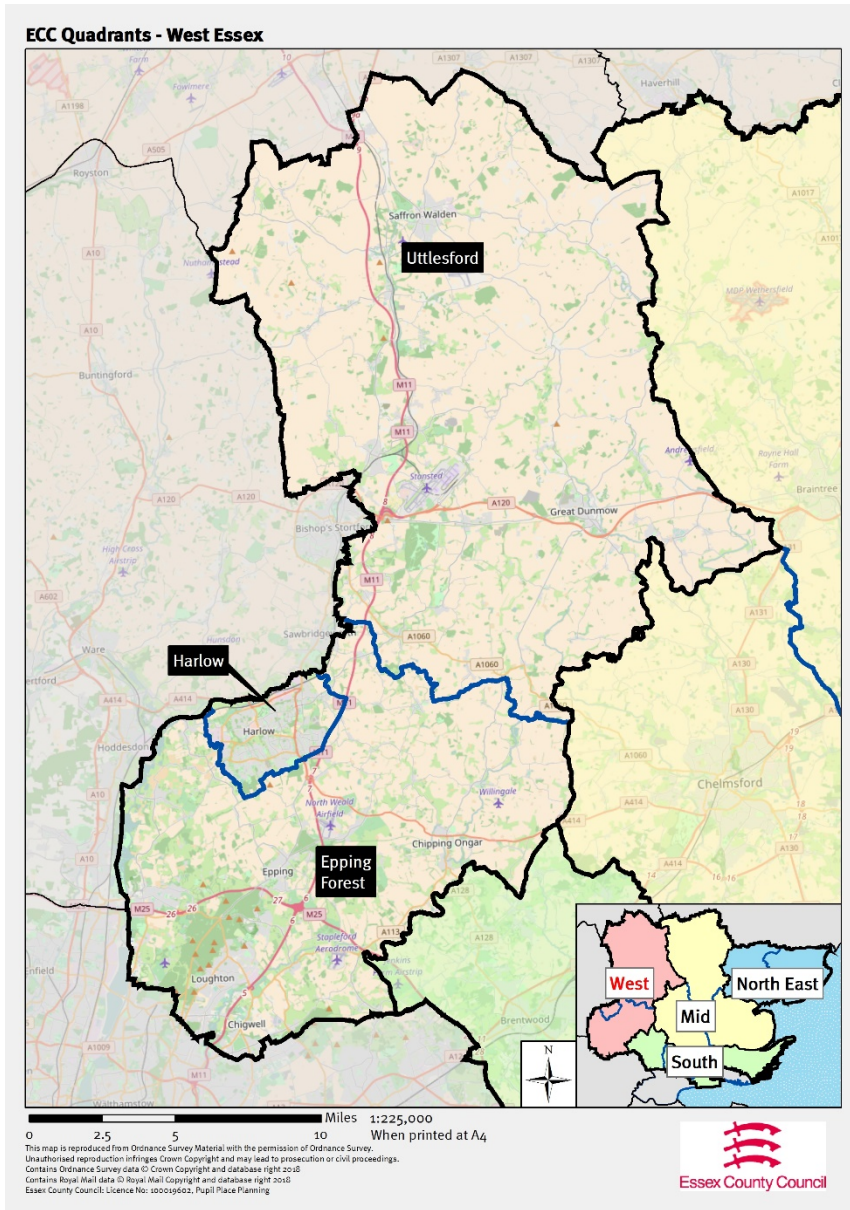
Year	NOR
21/22	3,138
22/23	3,188
23/24	3,214
24/25	3,213
25/26	3,200

Project Pipeline

School	Year	Description	Places
No expansion projects currently in pipeline			

These schools draw in a very high number of pupils from Southend. The admissions criteria of the schools will enable them to accommodate local children before Southend children as local demand grows. ECC are in contact with Southend Borough Council about this.

3.4 West Essex



For the purposes of school organisation and place planning West Essex is Uttlesford and Epping Forest districts and Harlow. Demand for school places in this quadrant is influenced considerably by cross-border pupil movement as it borders Greater London and Hertfordshire authorities.

Harlow has recently adopted a new Local Development Plan. Epping Forest's Plan is at Examination. Uttlesford has withdrawn the draft Plan that it submitted to the Secretary of State for Examination and is starting work on a new plan.

3.4.1 Epping Forest

Primary School Planning Groups

1. Ongar

Current PAN: 142

Current Capacity: 990

Reception Place Forecast

Year	21/22	22/23	23/24	24/25	25/26	26/27	27/28	28/29	29/30	30/31
+/-	14	33	11	3	-2	-5	-5	-4	-4	-4
Chipping Ongar Primary, Dr Walker's CE Primary, High Ongar Primary, Matching Green CE Primary, Moreton CE Primary, Ongar Primary										

Number on Roll (NOR)

Year	NOR
21/22	877
22/23	871
23/24	904
24/25	956
25/26	1,000

Project Pipeline

School	Year	Description	Places
No expansion projects currently in pipeline			

2. Epping

Current PAN: 225

Current Capacity: 1600

Reception Place Forecast

Year	21/22	22/23	23/24	24/25	25/26	26/27	27/28	28/29	29/30	30/31
+/-	23	15	9	-5	-14	-22	-30	-37	-45	-52
Coopersale and Theydon Garnon CE Primary, Epping, Epping Upland CE Primary, Ivy Chimneys Primary, St Andrew's CE Primary										

Number on Roll (NOR)

Year	NOR
21/22	1,446
22/23	1,445
23/24	1,490
24/25	1,588
25/26	1,668

Project Pipeline

School	Year	Description	Places
New Primary School	25/26	2 form entry new primary school	60/420

Planned new housing in this area is causing the forecast deficit of school places, and a site for a new primary school is included in the emerging Local Plan.

3. Waltham Abbey

Current PAN: 240

Current Capacity: 1734

Reception Place Forecast

Year	21/22	22/23	23/24	24/25	25/26	26/27	27/28	28/29	29/30	30/31
+/-	-36	-18	-12	-19	-23	-26	-29	-31	-34	-34
High Beech CE Primary, Hillhouse CE Primary, Leverton Primary, Upshire Primary, Waltham Holy Cross Primary										

Number on Roll (NOR)

Year	NOR
21/22	1,701
22/23	1,745
23/24	1,782
24/25	1,787
25/26	1,832

Project Pipeline

School	Year	Description	Places
tbc	23/24	1 form entry expansion	30/210

Should there be high local demand for school places prior to the proposed expansion project then bulge classes will be implemented to ensure sufficient local capacity.

4. Buckhurst Hill / Loughton

Current PAN: 615

Current Capacity: 4153

Reception Place Forecast

Year	21/22	22/23	23/24	24/25	25/26	26/27	27/28	28/29	29/30	30/31
+/-	56	72	60	48	47	48	47	51	50	50
Alderton Infant, Alderton Junior, Buckhurst Hill Primary, Hereward Primary, St John's CE Primary, St John Fisher Catholic Primary, Staples Road Primary, Theydon Bois Primary, Thomas Willingale Primary, White Bridge Primary										

Number on Roll (NOR)

Year	NOR
21/22	3,810
22/23	3,805
23/24	3,851
24/25	3,868
25/26	3,931

Project Pipeline

School	Year	Description	Places
No expansion projects currently in pipeline			

5. Chigwell / Lambourne

Current PAN: 170
Current Capacity: 1129

Reception Place Forecast

Year	21/22	22/23	23/24	24/25	25/26	26/27	27/28	28/29	29/30	30/31
+/-	-2	5	1	-3	-2	-1	-1	0	-1	-3
Chigwell Primary, Chigwell Row Infant, Lambourne Primary, Limes Farm Infant, Limes Farm Junior, Stapleford Abbots Primary										

Number on Roll (NOR)

Year	NOR
21/22	992
22/23	1,051
23/24	1,113
24/25	1,156
25/26	1,194

Project Pipeline

School	Year	Description	Places
tbc	23/24	Expansion at KS2	15/60

In this planning group the schools currently have more capacity in KS1 than KS2. In recent years this has not been an issue, but now demand for places has risen, further capacity is required in KS2.

6. Nazeing (not grouped)

Current PAN: 45
Current Capacity: 300

Reception Place Forecast

Year	21/22	22/23	23/24	24/25	25/26	26/27	27/28	28/29	29/30	30/31
+/-	3	5	0	-3	-4	-4	-4	-3	-3	-3
Nazeing Primary										

Number on Roll (NOR)

Year	NOR
21/22	295
22/23	297
23/24	314
24/25	328
25/26	336

Project Pipeline

School	Year	Description	Places
No expansion projects currently in pipeline			

7. Roydon (not grouped)

Current PAN: 30
Current Capacity: 210

Reception Place Forecast

Year	21/22	22/23	23/24	24/25	25/26	26/27	27/28	28/29	29/30	30/31
+/-	2	-2	-1	-2	-3	-2	-2	-2	-2	-2
Roydon Primary										

Number on Roll (NOR)

Year	NOR
21/22	209
22/23	210
23/24	218
24/25	228
25/26	229

Project Pipeline

School	Year	Description	Places
No expansion projects currently in pipeline			

Secondary School Planning Groups

1. Loughton

Current PAN: 879
Current Capacity: 4903

Year 7 Place Forecast

Year	21/22	22/23	23/24	24/25	25/26	26/27	27/28	28/29	29/30	30/31
+/-	28	24	35	8	70	23	40	-23	21	6
Davenant, Debden Park High School, Roding Valley High School, West Hatch High School										

Number on Roll (NOR)

Year	NOR
21/22	5,124
22/23	5,223
23/24	5,286
24/25	5,362
25/26	5,304

Project Pipeline

School	Year	Description	Places
No expansion projects currently in pipeline			

2. Epping / Waltham Abbey

Current PAN: 360
Current Capacity: 1770

Year 7 Place Forecast

Year	21/22	22/23	23/24	24/25	25/26	26/27	27/28	28/29	29/30	30/31
+/-	42	24	15	-4	27	-14	1	-35	-37	-37
Epping St John's CE, King Harold										

Number on Roll (NOR)

Year	NOR
21/22	1,691
22/23	1,739
23/24	1,804
24/25	1,868
25/26	1,890

Project Pipeline

School	Year	Description	Places
New Secondary School	28/29	6 form entry new secondary school	180/900

A site for a new primary school is included in Epping Forest's Local Plan. A new school will be delivered to meet local demand for school places as major housing developments progress.

3. Ongar (not grouped)

Current PAN: 120

Current Capacity: 800

Year 7 Place Forecast

Year	21/22	22/23	23/24	24/25	25/26	26/27	27/28	28/29	29/30	30/31
+/-	-14	-20	-29	-15	-6	-16	-26	-28	-22	-30
The Ongar Academy										

Number on Roll (NOR)

Year	NOR
21/22	780
22/23	822
23/24	877
24/25	904
25/26	912

Project Pipeline

School	Year	Description	Places
The Ongar Academy	23/24	1 form entry expansion	30/150

3.4.2 Harlow

Primary School Planning Groups

1. Harlow east

Current PAN: 330
Current Capacity: 2460

Reception Place Forecast

Year	21/22	22/23	23/24	24/25	25/26	26/27	27/28	28/29	29/30	30/31
+/-	42	48	25	8	-10	-34	-51	-68	-86	-104
Church Langley Primary, Churchgate CE Primary, Fawbert and Barnard Primary, Harlowbury Primary, Henry Moore Primary, Newhall Primary, Potter Street Primary										

Number on Roll (NOR)

Year	NOR
21/22	2,092
22/23	2,130
23/24	2,216
24/25	2,310
25/26	2,443

Project Pipeline

School	Year	Description	Places
Harlowbury Primary	22/23	1 form entry expansion	30/210

A site for a new primary school on the Newhall development, along with local expansion options, will provide places to meet medium and long-term demand. Demand is driven by new housing and is being closely monitored.

2. Harlow southwest

Current PAN: 630
Current Capacity: 4398

Reception Place Forecast

Year	21/22	22/23	23/24	24/25	25/26	26/27	27/28	28/29	29/30	30/31
+/-	80	85	72	59	55	46	40	31	22	11
Abbotsweld Primary, Holy Cross Catholic Primary, Jerounds Primary, Katherines Primary, Kingsmoor Primary, Latton Green Primary, Longwood Primary, Milwards Primary, Pear Tree Mead Primary, Purford Green Primary, St James CE Primary, St Luke's Catholic Primary, Water Lane Primary, William Martin CE Infant, William Martin CE Junior										

Number on Roll (NOR)

Year	NOR
21/22	3,945
22/23	3,936
23/24	3,964
24/25	3,991
25/26	4,023

Project Pipeline

School	Year	Description	Places
No expansion projects currently in pipeline			

3. Harlow northwest

Current PAN: 420
Current Capacity: 2984

Reception Place Forecast

Year	21/22	22/23	23/24	24/25	25/26	26/27	27/28	28/29	29/30	30/31
+/-	27	42	21	16	19	19	22	23	24	20
Cooks Spinney Primary, The Downs Primary, Freshwaters Primary, St Alban's Catholic Primary, Tany's Dell Primary, Hare Street Primary, Little Parndon Primary, Pemberley Primary										

Number on Roll (NOR)

Year	NOR
21/22	2,841
22/23	2,830
23/24	2,856
24/25	2,854
25/26	2,829

Project Pipeline

School	Year	Description	Places
No expansion projects currently in pipeline			

Secondary School Planning Groups

1. Harlow

Current PAN: 1192

Current Capacity: 5940

Year 7 Place Forecast

Year	21/22	22/23	23/24	24/25	25/26	26/27	27/28	28/29	29/30	30/31
+/-	22	-16	-18	-91	-74	-47	-79	-94	-94	-152
Burnt Mill Academy, Mark Hall Academy, Passmores Academy, BMAT STEM, Sir Frederick Gibberd College, St Mark's Catholic, Stewards Academy										

Number on Roll (NOR)

Year	NOR
21/22	5,767
22/23	6,036
23/24	6,217
24/25	6,377
25/26	6,539

Project Pipeline

School	Year	Description	Places
Sir Frederick Gibberd College	21/22	2 form entry expansion	60/780
Sir Frederick Gibberd College	24/25	2 form entry expansion	60/300

Sir Frederick Gibberd is currently operating in temporary accommodation and has been admitting four forms of entry into Year 7, but will expand to meet local demand and move into its permanent buildings in 2021.

3.4.3 Uttlesford

Primary School Planning Groups

1. Sampfords / Thaxted / Wimbish

Current PAN: 106

Current Capacity: 764

Reception Place Forecast

Year	21/22	22/23	23/24	24/25	25/26	26/27	27/28	28/29	29/30	30/31
+/-	28	29	19	17	16	16	15	14	14	13
Debden CE Primary, Great Sampford Primary, Radwinter CE Primary, Thaxted Primary, Wimbish Primary										

Number on Roll (NOR)

Year	NOR
21/22	673
22/23	664
23/24	670
24/25	652
25/26	632

Project Pipeline

School	Year	Description	Places
No expansion projects currently in pipeline			

2. Saffron Walden

Current PAN: 210

Current Capacity: 1490

Reception Place Forecast

Year	21/22	22/23	23/24	24/25	25/26	26/27	27/28	28/29	29/30	30/31
+/-	46	32	15	9	8	7	5	3	2	1
Katherine Semar Infant, Katherine Semar Junior, R A Butler Infant, R A Butler Junior, St Mary's CE Primary, St Thomas More Catholic Primary										

Number on Roll (NOR)

Year	NOR
21/22	1,416
22/23	1,410
23/24	1,422
24/25	1,401
25/26	1,390

Project Pipeline

School	Year	Description	Places
No expansion projects currently in pipeline			

There is a significant level of new housing planned in Saffron Walden which will lead to the requirement for a new primary school. A site for a new primary school has been secured through S106 agreements.

3. Stansted

Current PAN: 205
Current Capacity: 1631

Reception Place Forecast

Year	21/22	22/23	23/24	24/25	25/26	26/27	27/28	28/29	29/30	30/31
+/-	14	-6	-4	-10	-11	-12	-15	-16	-18	-18
Bentfield Primary, Birchanger CE Primary, Elsenham CE Primary, Farnham CE Primary, Henham And Ugley Primary, Magna Carta Primary, Manuden Primary, St Mary's CE Primary										

Number on Roll (NOR)

Year	NOR
21/22	1,383
22/23	1,422
23/24	1,452
24/25	1,485
25/26	1,494

Project Pipeline

School	Year	Description	Places
Elsenham Primary School	22/23	Increase PAN by 30. The school was expanded in 2018, and has been admitting additional pupils in line with demand	30/0

4. Dunmow

Current PAN: 140
Current Capacity: 1010

Reception Place Forecast

Year	21/22	22/23	23/24	24/25	25/26	26/27	27/28	28/29	29/30	30/31
+/-	11	-12	-19	-28	-35	-44	-57	-66	-75	-84
Dunmow St Mary's Primary, Great Dunmow Primary, Great Easton CE Primary										

Number on Roll (NOR)

Year	NOR
21/22	1,040
22/23	1,094
23/24	1,140
24/25	1,183
25/26	1,235

Project Pipeline

School	Year	Description	Places
Helena Romanes School	21/22	1 form entry expansion	30/210
Helena Romanes School	22/23	1 form entry expansion	30/210
New Primary School	27/28	2 form entry new primary school	60/420

5. Hatfield / Sheering

Current PAN: 81
Current Capacity: 567

Reception Place Forecast

Year	21/22	22/23	23/24	24/25	25/26	26/27	27/28	28/29	29/30	30/31
+/-	16	14	12	9	8	8	7	6	6	6
Hatfield Heath Primary, Little Hallingbury CE Primary, Sheering CE Primary, St Mary's CE Primary										

Number on Roll (NOR)

Year	NOR
21/22	498
22/23	482
23/24	485
24/25	493
25/26	501

Project Pipeline

School	Year	Description	Places
No expansion projects currently in pipeline			

6. Clavering / Newport / Rickling

Current PAN: 75
Current Capacity: 513

Reception Place Forecast

Year	21/22	22/23	23/24	24/25	25/26	26/27	27/28	28/29	29/30	30/31
+/-	12	15	5	3	3	1	0	0	0	-1
Clavering Primary, Newport Primary, Rickling CE Primary										

Number on Roll (NOR)

Year	NOR
21/22	484
22/23	499
23/24	499
24/25	506
25/26	501

Project Pipeline

School	Year	Description	Places
No expansion projects currently in pipeline			

There is a significant amount of new housing planned, particularly in the Newport area. As housing plans are confirmed, forecasts will be adjusted and school expansion implemented.

7. Felsted

Current PAN: 95
Current Capacity: 698

Reception Place Forecast

Year	21/22	22/23	23/24	24/25	25/26	26/27	27/28	28/29	29/30	30/31
+/-	-2	6	-3	-4	-5	-5	-7	-7	-8	-8
Felsted Primary, Flitch Green Primary, Stebbing Primary										

Number on Roll (NOR)

Year	NOR
21/22	678
22/23	666
23/24	693
24/25	696
25/26	691

Project Pipeline

School	Year	Description	Places
No expansion projects currently in pipeline			

Stebbing Primary recently expanded its PAN from 20 to 30, which will be incorporated into future forecasts and will ensure there are sufficient local school places.

8. Takeley

Current PAN: 90
Current Capacity: 690

Reception Place Forecast

Year	21/22	22/23	23/24	24/25	25/26	26/27	27/28	28/29	29/30	30/31
+/-	17	11	14	13	13	12	11	11	10	10
Roseacres Primary, Takeley Primary										

Number on Roll (NOR)

Year	NOR
21/22	572
22/23	577
23/24	566
24/25	568
25/26	542

Project Pipeline

School	Year	Description	Places
No expansion projects currently in pipeline			

9. Ashdon (not grouped)

Current PAN: 15
Current Capacity: 105

Reception Place Forecast

Year	21/22	22/23	23/24	24/25	25/26	26/27	27/28	28/29	29/30	30/31
+/-	10	7	8	8	7	7	7	7	7	7
Ashdon Primary										

Number on Roll (NOR)

Year	NOR
21/22	60
22/23	59
23/24	55
24/25	48
25/26	46

Project Pipeline

School	Year	Description	Places
No expansion projects currently in pipeline			

10. Crishall (not grouped)

Current PAN: 15
Current Capacity: 105

Reception Place Forecast

Year	21/22	22/23	23/24	24/25	25/26	26/27	27/28	28/29	29/30	30/31
+/-	0	0	0	0	0	-1	-1	-1	-1	-1
Crishall Holy Trinity & St Nicholas CE Primary										

Number on Roll (NOR)

Year	NOR
21/22	98
22/23	99
23/24	102
24/25	103
25/26	103

Project Pipeline

School	Year	Description	Places
No expansion projects currently in pipeline			

11. Great Chesterford (not grouped)

Current PAN: 30
Current Capacity: 210

Reception Place Forecast

Year	21/22	22/23	23/24	24/25	25/26	26/27	27/28	28/29	29/30	30/31
+/-	7	4	4	3	3	3	3	3	3	2
Great Chesterford CE Primary										

Number on Roll (NOR)

Year	NOR
21/22	201
22/23	195
23/24	195
24/25	194
25/26	191

Project Pipeline

School	Year	Description	Places
No expansion projects currently in pipeline			

12. Rodings (not grouped)

Current PAN: 30
Current Capacity: 270

Reception Place Forecast

Year	21/22	22/23	23/24	24/25	25/26	26/27	27/28	28/29	29/30	30/31
+/-	4	-7	-3	-4	-4	-4	-5	-5	-5	-5
Rodings Primary										

Number on Roll (NOR)

Year	NOR
21/22	232
22/23	237
23/24	241
24/25	234
25/26	235

Project Pipeline

School	Year	Description	Places
No expansion projects currently in pipeline			

The school has additional accommodation to enable it to admit additional pupils when there are large spikes in local demand. There are several bulge classes which are agreed and planned for with the school.

Secondary School Planning Groups

1. Helena Romanes (not grouped)

Current PAN: 270
Current Capacity: 1563

Year 7 Place Forecast

Year	21/22	22/23	23/24	24/25	25/26	26/27	27/28	28/29	29/30	30/31
+/-	-17	13	12	16	22	-22	-12	4	-7	-20
Helena Romanes School										

Number on Roll (NOR)

Year	NOR
21/22	1,311
22/23	1,367
23/24	1,412
24/25	1,461
25/26	1,491

Project Pipeline

School	Year	Description	Places
No expansion projects currently in pipeline			

2. Forest Hall (not grouped)

Current PAN: 112
Current Capacity: 660

Year 7 Place Forecast

Year	21/22	22/23	23/24	24/25	25/26	26/27	27/28	28/29	29/30	30/31
+/-	-5	-36	-27	-16	-18	-23	-29	-13	-26	-24
Forest Hall School										

Number on Roll (NOR)

Year	NOR
21/22	510
22/23	572
23/24	616
24/25	641
25/26	679

Project Pipeline

School	Year	Description	Places
Forest Hall School	21/22	½ form entry expansion	18/90

Demand for school places at Forest Hall School is closely linked to major housing development and the provision of a new school north of Bishop's Stortford in Hertfordshire. The situation is being closely monitored and should there be further demand for school places at Forest Hall there is an option available to expand the school further.

3. Newport / Saffron Walden

Current PAN: 500
Current Capacity: 3080

Year 7 Place Forecast

Year	21/22	22/23	23/24	24/25	25/26	26/27	27/28	28/29	29/30	30/31
+/-	29	62	63	82	59	123	60	142	148	113
Joyce Frankland Academy, Saffron Walden County High										

Number on Roll (NOR)

Year	NOR
21/22	3,119
22/23	3,122
23/24	3,134
24/25	3,076
25/26	3,046

Project Pipeline

School	Year	Description	Places
No expansion projects currently in pipeline			

Past Expansion Projects and New Schools in Essex

The tables below summarises by quadrant the permanent expansion projects that have been delivered at mainstream schools across Essex over the past 5 years, as well as the new schools that have been opened.

Mid Essex

District	School	Project Type
Braintree	Alec Hunter Secondary	Expansion
Braintree	Chipping Hill Primary	Expansion
Braintree	Cressing Primary	Expansion
Braintree	De Vere Primary	Expansion
Braintree	Earls Colne Primary	Expansion
Braintree	John Bunyan Primary	Expansion
Braintree	Silver End Primary	Expansion
Braintree	St Giles Primary	Expansion

District	School	Project Type
Chelmsford	Beaulieu Park School	New School
Chelmsford	Boreham Primary	Expansion
Chelmsford	Broomfield Primary	Expansion
Chelmsford	Little Waltham Primary	Expansion
Chelmsford	Maltese Road Primary	New School
Chelmsford	Margaretting Primary	Expansion
Chelmsford	Moulsham High	Expansion
Chelmsford	Moulsham Infant	Expansion
Chelmsford	Moulsham Junior	Expansion
Chelmsford	Springfield Primary	Expansion

District	School	Project Type
Maldon	(no projects)	-

North East Essex

District	School	Project Type
Colchester	Braiswick Primary	New School
Colchester	Camulos Academy	New School
Colchester	Home Farm Primary	Expansion
Colchester	Lakelands Primary	New School
Colchester	Monkwick Infant	Expansion
Colchester	Monkwick Junior	Expansion
Colchester	Paxman Academy	New School
Colchester	Philip Morant Secondary	Expansion
Colchester	St John's Green Primary	Expansion
Colchester	St Lawrence Primary	Expansion
Colchester	St Michael's Primary	Expansion
Colchester	Stanway Fiveways Primary	Expansion
Colchester	Stanway Primary	Expansion
Colchester	Stanway Secondary	Expansion
Colchester	The Gilbert Secondary	Expansion

District	School	Project Type
Tendring	Alresford Primary	Expansion
Tendring	Colne Secondary	Expansion
Tendring	Hamford Primary	Expansion
Tendring	Holland Haven Primary	Expansion
Tendring	Manningtree Secondary	Expansion
Tendring	Mayflower Primary	Expansion
Tendring	Ravens Academy	Expansion

South Essex

District	School	Project Type
Basildon	Abacus Primary	Expansion
Basildon	Beauchamps High	Expansion
Basildon	Brightside Primary	Expansion
Basildon	Ghyllgrove Primary	Expansion
Basildon	Lee Chapel Primary	Expansion
Basildon	Merrylands Primary	Expansion
Basildon	Northlands Primary	Expansion
Basildon	Phoenix Primary	Expansion
Basildon	Runwell Primary	Expansion
Basildon	Ryedene Primary	Expansion
Basildon	Whitmore Primary	Expansion

District	School	Project Type
Brentwood	Hogarth Primary	Expansion
Brentwood	Larchwood Primary	Expansion
Brentwood	Warley Primary	Expansion
Brentwood	West Horndon Primary	Expansion

District	School	Project Type
Castle Point	Northwick Park Primary	Expansion

District	School	Project Type
Rochford	Fitzwimarc Secondary	Expansion
Rochford	Westerings Primary	Expansion

West Essex

District	School	Project Type
Epping Forest	Coopersale & Theydon Garnon Primary	Expansion
Epping Forest	Epping Primary	Expansion
Epping Forest	Ivy Chimneys	Expansion
Epping Forest	Ongar Academy	New School
Epping Forest	Roding Valley Secondary	Expansion
Epping Forest	St Andrew's Primary	Expansion
Epping Forest	West Hatch Secondary	Expansion
Epping Forest	White Bridge Primary	Expansion

District	School	Project Type
Harlow	Freshwaters Primary	Expansion
Harlow	Kingsmoor Primary	Expansion
Harlow	Longwood Primary	Expansion
Harlow	Newhall Primary	New School
Harlow	Pear Tree Mead Primary	Expansion
Harlow	Sir Frederick Gibberd College	New School
Harlow	The Downs Primary	Expansion

District	School	Project Type
Uttlesford	Clavering Primary	Expansion
Uttlesford	Elsenham Primary	Expansion
Uttlesford	Flitch Green Primary	Expansion
Uttlesford	Helena Romanes Secondary	Expansion
Uttlesford	Joyce Frankland Secondary	Expansion
Uttlesford	Magna Carta Primary	New School
Uttlesford	Newport Primary	Expansion
Uttlesford	R A Butler Infant	Expansion
Uttlesford	R A Butler Junior	Expansion
Uttlesford	Radwinter Primary	Expansion
Uttlesford	Rodings Primary	Expansion
Uttlesford	Roseacres Primary	New School
Uttlesford	Stebbing Primary	Expansion
Uttlesford	Wimbish Primary	Expansion